

PROJECT DATA

AAIC, INCORPORATED PROJECT NO.: 16011
SUE BID NO.: 80012

SCHOOL OF DENTAL MEDICINE
273 ADMINISTRATION BUILDING
2ND FLOOR RENOVATIONS
ALTON, IL

FOR: SOUTHERN ILLINOIS UNIVERSITY
EDWARDSVILLE

BY: **aaic** AAIC inc.
One Design Mesa
Collinsville, Illinois
62234
p 618.345.1270
f 618.345.1282
www.aaicinc.com

INDEX OF DRAWINGS

GENERAL

G.1 COVER SHEET

ARCHITECTURAL

A.1 PHASING PLAN AND ROOM FINISH SCHEDULE
A.2 DEMOLITION AND NEW WORK FLOOR PLANS
A.3 DEMOLITION AND NEW WORK REFLECTED CEILING PLANS

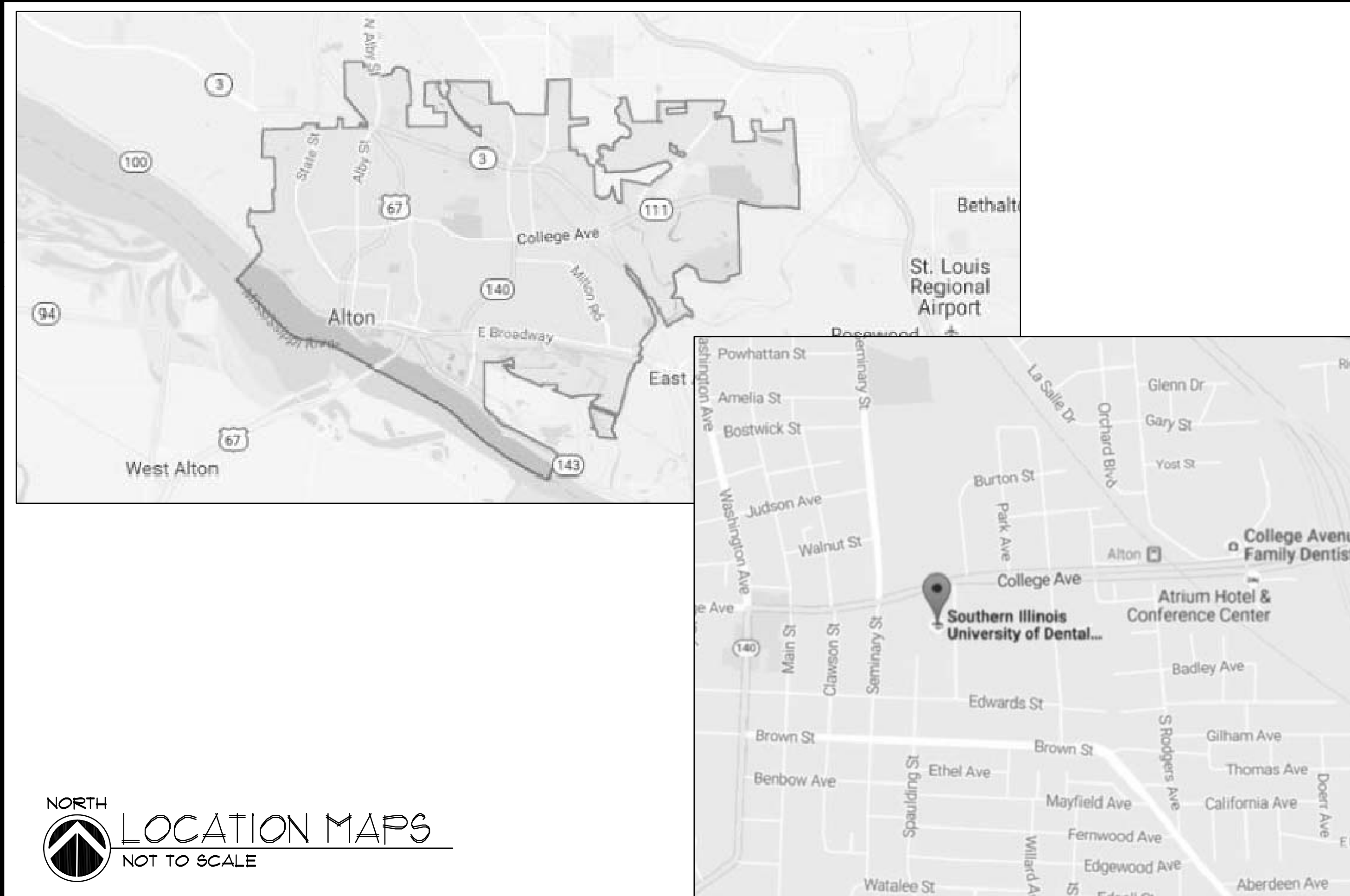
ELECTRICAL AND MECHANICAL

DE1.0 ELECTRICAL DEMOLITION PLAN
DE2.0 POWER AND SYSTEMS DEMOLITION PLAN
DM1.0 MECHANICAL DEMOLITION PLAN
E1.0 LIGHTING NEW WORK PLAN
E2.0 POWER AND SYSTEMS NEW WORK PLAN
M1.0 MECHANICAL NEW WORK PLAN

CONSULTANTS

BRIC
PARTNERSHIP, LLC
CONSULTING ENGINEERS
100 EAST WASHINGTON, SUITE 220
BELLEVILLE, IL 62220
TEL 618.277.5200
FAX 618.277.5227

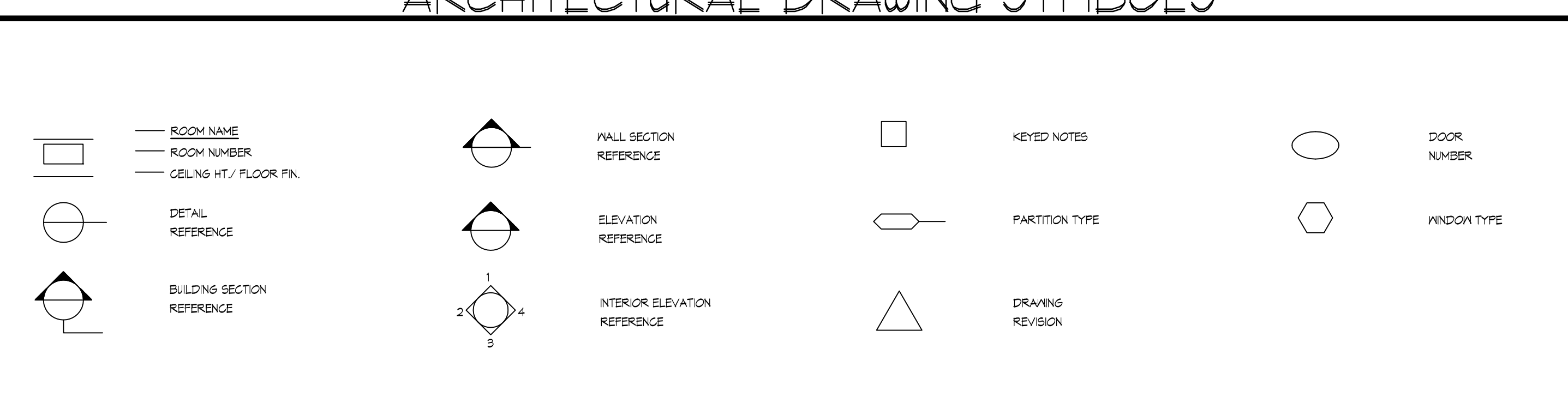
PROJECT LOCATION



ARCHITECTURAL ABBREVIATIONS

A.B.	ANCHOR BOLT	E.O.S.	EDGE OF SLAB	KITCH.	KITCHEN	RESIL.	RESILIENT
A.C.	AIR CONDITION (INS)	E.P.	ELECTRIC PANEL	LAV.	LAVATORY	REV.	REVISION
A.C.T.	ACOUSTICAL CEILING TILE SYS.	E.Q.	EQUAL	L.V.	LINEAL FEET	R.M.	ROUGH OPENING
ADD.	ADDENDUM, ADDITIONAL	EQUIP.	EQUIPMENT	L.B.	LINE LOAD	R.O.	RETURN TO OWNER
ADJ.	ADJACENT, ADJUSTABLE	E.W.C.	ELECTRIC WATER COOLER	L.F.	LINEAL FEET	R.T.O.	RETURN TO OWNER
A.F.F.	ABOVE FINISH FLOOR	EXST., EXG., EX.	EXISTING	L.L.	LINEAL FEET	S.	SOUTH
AL./ALUM.	ALUMINUM	EXP.	EXPOSE (ED), EXPANSION	L.T.	LINEAL FEET	S.C.	SOLID CORE
ALT.	ALTERNATE	EXT.	EXTERIOR	M.	MASONRY	SECT., SECTN.	SECTION
ANOD.	ANODIZED	FDN./FDN.	FOUNDATION	M.AS.	MATERIAL	S.F.	SQUARE FEET
APPROX.	APPROXIMATE	F.E.	FIRE EXTINGUISHER	M.AX.	MECHANICAL	S.H.T.S.	SHEATHING
ARCH.	ARCHITECT (URE) (URAL)	F.E.G.	FIRE EXTINGUISHER	M.EGH.	MECHANICAL	SIM.	SIMILAR
ASPH.	ASPHALT	F.F.	FIBERGLASS MAT REIN. GYP. BD.	M.FR.	MECHANICAL	S.J.	SEALANT JOINT IV BACKER ROD.
BEI	BUILDING EXPANSION JOINT	FRG.	FINISH FLOOR	M.M.	MANUFACTURE (ER) (ED)	S.N.D.	SANITARY NAPKIN DISPENSER
BD.	BOARD	FN.	FINISH	M.MC.	MISCELLANEOUS	SPKLR.	SPRINKLER
BF.	BIFOLD	FL./FLR.	FLOOR (ING)	M.O.	MASONRY OPENING	SPC.	SPECIAL COATING
BK./BRK.	BLOCKING	FLASH.	FLASHING	M.O.P.	MOUNT (ED)	SQ.	SQUARE
BLDG.	BUILDING	FLOR.	FLORESCENT	M.TS.	MEETINGS	S.S.	STAINLESS STEEL
BM.	BEAM	FLEX.	FLEXIBLE	M.TS.	METAL	STD.	STANDARD
BO.	BY OWNER	FTG.	FOOTING	N.	NORTH	STL.	STEEL
BOT.	BOTTOM	F.V.	FIELD VERIFY	NAT.	NATURAL	STRUCT.	STRUCTURE, STRUCTURAL
BRG.	BEARING	GA.	GAUGE	N.I.C.	NOT IN CONTRACT	SUSP.	SUSPEND, SUSPENDED
CAB.	CABINET	GAL.	GALLON	N.O.S.	NOMINAL SIZE	SYS.	SYSTEM
C.F.	CUBIC FEET	GALV.	GALVANIZED	O.C.	ON CENTER	TEL.	TELEPHONE
C.J.	CONTROL JOINT	G.B./GYP. BD.	GYP. BOARD	O.D.	OUTSIDE DIAMETER	TEMP.	TEMPORARY, TEMPERED, TEMPERATURE
CLS.	CEILING	G.C.	GENERAL CONTRACTOR	OFF.	OFFICE	TAG	TONGUE AND GROOVE
C.M.U.	CONCRETE MASONRY UNIT	G.S.	GLASS	O.F.O.A.	OVERHEAD DOOR (SECTIONAL)	TERR.	TERRAZZO
CONC.	CONCRETE	GYP.	GYP. BOARD	OH.	OVERHEAD DOOR (SECTIONAL)	THRESH.	THRESHOLD
CONF.	CONFERENCE	H.B.	HOSE BB	OH.	OVERHEAD DOOR (SECTIONAL)	T.O.C.	TOP OF CONCRETE
CONST.	CONSTRUCTION	H.C.	HANDICAPPED	OH.	OVERHEAD DOOR (SECTIONAL)	TOILET.	TOILET
CONT.	CONTINUOUS, CONTINUED	H.D.	HIGH DENSITY	OH.	OVERHEAD DOOR (SECTIONAL)	T.O.S.	TOP OF STEEL
COL.	COLUMN	H.D.V. (R)	HARDWARE	OH.	OVERHEAD DOOR (SECTIONAL)	T.O.	TOP OF
CORR.	CORRIDOR	H.D.V.D.	HARDWOOD	OH.	OVERHEAD DOOR (SECTIONAL)	TYP.	TYPICAL
CAR.	CARPET	H.M.	HOLLOW METAL	OH.	OVERHEAD DOOR (SECTIONAL)	TV.	TELEVISION
CPT.	CARPET TILE	H.H.	HORIZONTAL	OH.	OVERHEAD DOOR (SECTIONAL)	UNF.	UNFINISHED
C.T.	CERAMIC TILE	H.T.	HORIZONTAL	OH.	OVERHEAD DOOR (SECTIONAL)	UR.	URNAL
C.Y.	CUBIC YARD	H.V.C.	HEATING & VENTILATING / AIR CONDITIONING	OH.	OVERHEAD DOOR (SECTIONAL)	UTL.	UTILITY, UTILITIES
DEM.O.	DEMOLITION	I.D.	INSIDE DIAMETER	PAV.	PAVED, PAVEMENT	V.	VINYL
DET./DTL.	DETAIL	INSUL.	INSULATION, INSULATED	PL.	PLATE	V.B.	VAPOR BARRIER, VINYL BASE
DIA.	DIAMETER	INT.	INTERIOR	PLB.	PLUMBING	V.C.T.	VINYL COMPOSITION TILE
DM.	DIMENSION	INCAND.	INCANDESCENT	PLY.	PLYWOOD	VENT.	VENTILATOR, VENTILATION
D.G.	FIBERGLASS MAT FACED GYP. BD.	JAN.	JANITOR	PLAS.	PLASTIC, PLASTER	VERT.	VERTICAL
D.L.	DEAD LOAD	J.B.	JUNCTION BOX	P.LAM.	PLASTIC LAMINATE	VEST.	VESTIBULE
DR.	DRY	JCT.	JUNCTION	P.NL.	PANEL	V.P.	VENEER PLASTER
DS.	DOWN SPOUT	JST.	JOIST	P.P.T.	PAPER TOWEL DISPENSER	V.T.	VINYL TILE
D.V.	DRYVALL	JT.	JOINT	P.S.F.	POUNDS / SQUARE FOOT	V.T.B.	VINYL TILE BASE
E.	EAST	J.V.C.	JUNCTION	P.S.I.	POUNDS / SQUARE INCH	V.V.G.	VINYL WALL COVERING
EA.	EACH	J.V.C.	JUNCTION	P.S.	PULL STATION (FIRE ALARM)	V.	VINYL
E.F.	EXHAUST FAN	J.V.C.	JUNCTION	P.T.	PAINT (ED), PRESSURE TREATED	V.V.F.	WELDED WIRE FABRIC
E.J.	EXPANSION JOINT	J.V.C.	JUNCTION	P.T.D.	PAPER TOWEL DISPENSER	V.V.F.	WELDED WIRE FABRIC
ELEC. ELECT.	ELECTRIC, ELECTRICAL	J.V.C.	JUNCTION	P.V.C.	POLYVINYL CHLORIDE	V.V.F.	WELDED WIRE FABRIC
ELEV./EL.	ELEVATION, ELEVATOR	J.V.C.	JUNCTION	P.V.M.T.	PAVEMENT	V.V.F.	WELDED WIRE FABRIC
ENGR.	ENGINEER (NG) (ED)	J.V.C.	JUNCTION	R.	RADIUS	V.V.F.	WELDED WIRE FABRIC

ARCHITECTURAL DRAWING SYMBOLS



NO.	DATE	REVISIONS

CONSULTANTS:
BRIC
PARTNERSHIP, LLC
CONSULTING ENGINEERS
100 EAST WASHINGTON, SUITE 220
BELLEVILLE, IL 62220
TEL 618.277.5200
FAX 618.277.5227

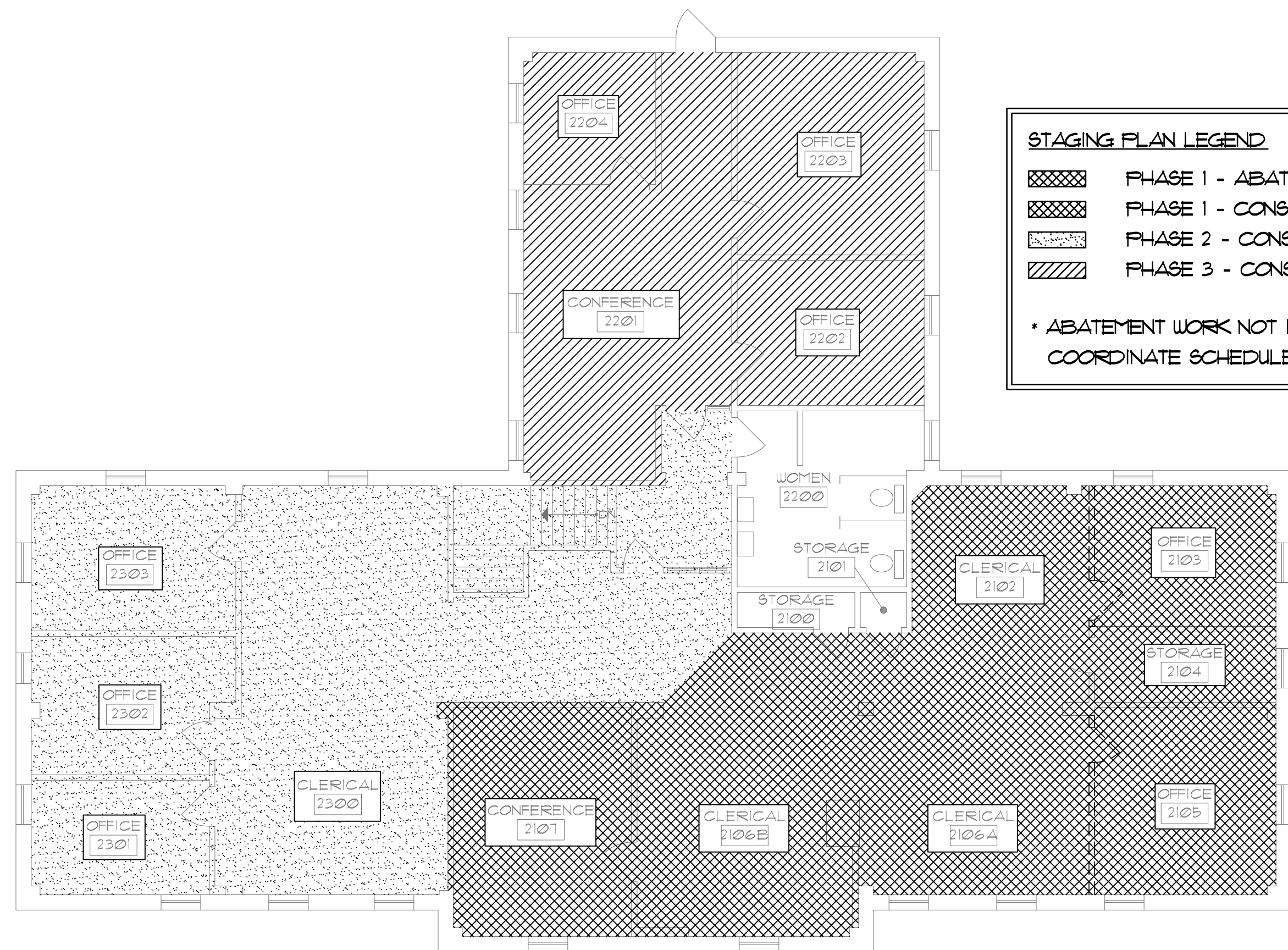
AAIC inc.
One Design Mesa
Collinsville, Illinois
62234
p 618.345.1270
f 618.345.1282
www.aaicinc.com

SCHOOL OF DENTAL MEDICINE
273 - ADMINISTRATION BUILDING
2ND FLOOR RENOVATIONS
DRAWING COVER SHEET

SIGNED: 12-22-16
CARVIN E. MORRIS
REGISTERED ARCHITECT
No. 001010501
EXPIRES: 11-30-18

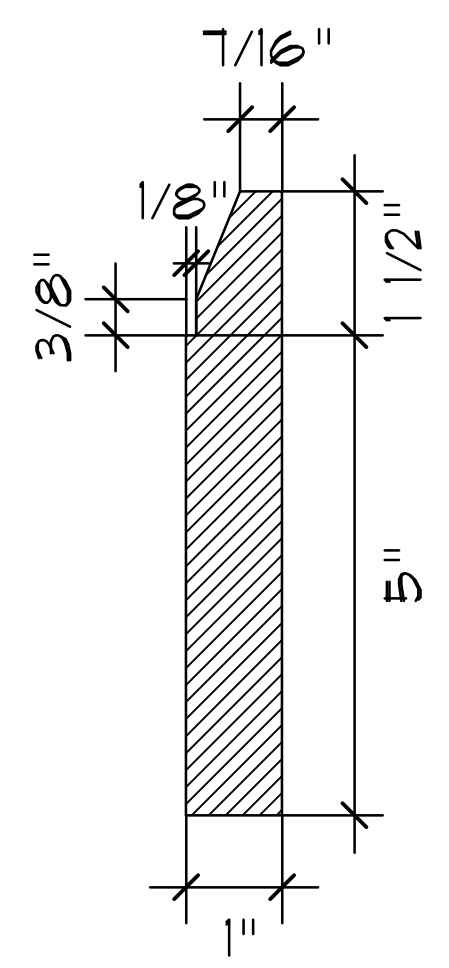
DATE: 12-22-16
DRAWN: ALP
APP: MGN
CHECK: MGN
APP: MGN

PROJECT PHASE:
BID DOCUMENTS
AAIC PROJECT NUMBER:
16011
SHEET NUMBER:
G.1
OF 10 SHEETS



STAGING PLAN LEGEND		START:	FINISH:
	PHASE 1 - ABATEMENT *	1/18/11	1/24/11
	PHASE 1 - CONSTRUCTION	1/25/11	2/21/11
	PHASE 2 - CONSTRUCTION	2/24/11	3/23/11
	PHASE 3 - CONSTRUCTION	3/28/11	4/24/11

* ABATEMENT WORK NOT INCLUDED WITH THIS CONTRACT. COORDINATE SCHEDULE.



1 PHASING PLAN
SCALE: 1/8" = 1'-0"
NORTH

2 WOOD WALL BASE DETAIL
SCALE: 6" = 1'-0"

ROOM FINISH SCHEDULE															
NO.	ROOM	FLOOR		BASE BOARD				WALL				CEILING		REMARKS	
		EXISTING	NEW	NORTH	SOUTH	EAST	WEST	NORTH	SOUTH	EAST	WEST	EXISTING	NEW		CEILING HEIGHT
2100	STORAGE	TERR.	--	--	--	--	--	--	--	--	--	EXIST.	--	MATCH EXIST.	
2101	STORAGE	TERR.	--	--	--	--	--	--	--	--	--	EXIST.	--	MATCH EXIST.	
2102	CLERICAL	WD T&G*	CAR. *	WD	--	VINYL	WD	P.T.	--	P.T.	P.T.	DEMO A.C.T.	A.C.T.	MATCH EXIST.	*FEATHER OUT FLOOR AT TERR. WITH HYDRAULIC CEMENT. SEE [2] ON A.2.
2103	OFFICE	WD T&G	CAR.	VINYL	WD	VINYL	VINYL	P.T.	P.T.	P.T.	P.T.	DEMO A.C.T.	A.C.T.	MATCH EXIST.	
2104	STORAGE	TERR.	--	--	--	--	--	--	--	--	--	EXIST.	--	MATCH EXIST.	
2105	OFFICE	WD T&G	CAR.	VINYL	VINYL	VINYL	VINYL	P.T.	P.T.	P.T.	P.T.	DEMO A.C.T.	A.C.T.	MATCH EXIST.	
2106A	CLERICAL	DEMO CONC.	CAR. **	--	WD	VINYL	WD	--	P.T.	P.T.	P.T.	DEMO A.C.T.	A.C.T.	MATCH EXIST.	**INSTALL 3/4" T&G PLYWOOD AND SELF LEVELING CONC. TOPPING
2106B	CLERICAL	WD T&G*	CAR. *	VINYL	VINYL	VINYL	WD	--	P.T.	P.T.	P.T.	DEMO A.C.T.	A.C.T.	MATCH EXIST.	*FEATHER OUT FLOOR AT TERR. WITH HYDRAULIC CEMENT. SEE [2] ON A.2.
2107	CONFERENCE	WD T&G	CAR.	WD	WD	WD	WD	P.T.	P.T.	P.T.	P.T.	DEMO A.C.T.	A.C.T.	MATCH EXIST.	
2300	CLERICAL	WD T&G*	CAR. *	WD	WD	VINYL	VINYL	P.T.	P.T.	P.T.	P.T.	DEMO A.C.T.	A.C.T.	MATCH EXIST.	*FEATHER OUT FLOOR AT TERR. WITH HYDRAULIC CEMENT. SEE [2] ON A.2.
2301	OFFICE	WD T&G	CAR.	VINYL	VINYL	VINYL	VINYL	P.T.	P.T.	P.T.	P.T.	DEMO A.C.T.	A.C.T.	MATCH EXIST.	
2302	OFFICE	WD T&G	CAR.	VINYL	VINYL	VINYL	VINYL	P.T.	P.T.	P.T.	P.T.	DEMO A.C.T.	A.C.T.	MATCH EXIST.	
2303	OFFICE	WD T&G	CAR.	VINYL	VINYL	VINYL	VINYL	P.T.	P.T.	P.T.	P.T.	DEMO A.C.T.	A.C.T.	MATCH EXIST.	
2201	CONFERENCE	WD T&G*	CAR. *	VINYL	VINYL	WD	WD	P.T.	P.T.	P.T.	P.T.	DEMO A.C.T.	A.C.T.	MATCH EXIST.	*FEATHER OUT FLOOR AT TERR. WITH HYDRAULIC CEMENT. SEE [2] ON A.2.
2202	OFFICE	WD T&G	CAR.	VINYL	WD	VINYL	VINYL	P.T.	P.T.	P.T.	P.T.	DEMO A.C.T.	A.C.T.	MATCH EXIST.	
2203	OFFICE	WD T&G	CAR.	VINYL	VINYL	VINYL	WD	P.T.	P.T.	P.T.	P.T.	DEMO A.C.T.	A.C.T.	MATCH EXIST.	
2204	OFFICE	WD T&G	CAR.	VINYL	VINYL	WD	VINYL	P.T.	P.T.	P.T.	P.T.	DEMO A.C.T.	A.C.T.	MATCH EXIST.	
--	STAIRS	DEMO TREADS	NEW TREADS	VINYL	VINYL	VINYL	VINYL	P.T.	P.T.	P.T.	P.T.	DEMO A.C.T.	A.C.T.	MATCH EXIST.	

* 1. PAINT ALL WALL SURFACES, WOOD BASE BOARD, DOOR FRAMES, CASING, INTERIOR SIDE OF WINDOW SASH IN ALL AREAS IDENTIFIED ON THE ROOM FINISH SCHEDULE.

GENERAL NOTES:

- ALL EXISTING CONSTRUCTION / FINISHES DISTURBED DURING CONSTRUCTION SHALL BE RESTORED TO A CONDITION AT LEAST EQUAL IN MATERIAL AND APPEARANCE TO THAT WHICH EXISTED BEFORE CONSTRUCTION BEGAN.
- CONTRACTOR SHALL FIELD VERIFY ALL EXISTING DIMENSIONS AND CONDITIONS. NOTIFY ARCHITECT/ENGINEER OF ANY DISCREPANCIES WHICH MAY AFFECT THE OUTCOME OF THE WORK.
- DUE TO AGE OF BUILDING IT IS ASSUMED THAT EXISTING PAINTED SURFACES CONTAIN LEAD BASED PAINT. CONTRACTOR IS RESPONSIBLE FOR INFORMING ALL ON SITE PERSONNEL OF THIS POTENTIAL AND SHALL COMPLY WITH ALL APPLICABLE STATE AND FEDERAL REQUIREMENTS.
- EXISTING WALLS WHERE DOORS HAVE BEEN REMOVED ARE TO BE PATCHED AND PAINTED.
- WALLS TO RECEIVE PAINT ARE TO BE PREPARED, PATCHED AND PAINTED FROM CORNER TO CORNER.
- KEEP EXISTING SMOKE AND HEAT DETECTORS CONNECTED DURING CONSTRUCTION AND RE-USE IN NEW CEILING INSTALLATION.
- ALL WIRELESS ROUTERS, NETWORK CABLES, AND MISCELLANEOUS NETWORK EQUIPMENT TO REMAIN IN PLACE - SEE ELECTRICAL SHEETS FOR MORE INFORMATION.
- PAINT ALL WALL SURFACES, WOOD BASE BOARD, DOOR FRAMES, CASING, INTERIOR SIDE OF WINDOW SASH IN ALL AREAS IDENTIFIED ON THE ROOM FINISH SCHEDULE.

NO.	DATE:	REVISIONS:

CONSULTANT:
BRIC
PARTNERSHIP, LLC
CONSULTING ENGINEERS
100 EAST WASHINGTON, SUITE 220
BELLEVILLE, IL 62220
TEL 618.277.5200
FAX 618.277.5227

AAIC inc.
One Design Mesa
Collinsville, Illinois
62234
p 618.345.1270
f 618.345.1282
www.aaicinc.com



SCHOOL OF DENTAL MEDICINE
273 - ADMINISTRATION BUILDING
2ND FLOOR RENOVATIONS
DRAWING: PHASING PLAN & ROOM FINISH SCHEDULE

SIGNED: 12-22-16
STATE OF ILLINOIS
CABVIN C. MORRIS
No. 001-010501
REGISTERED ARCHITECT
EXPIRES: 11-30-2018

DATE: 12/22/16
DRAWN: ALP
APP: MGN
CHECK: MGN
APP: MGN

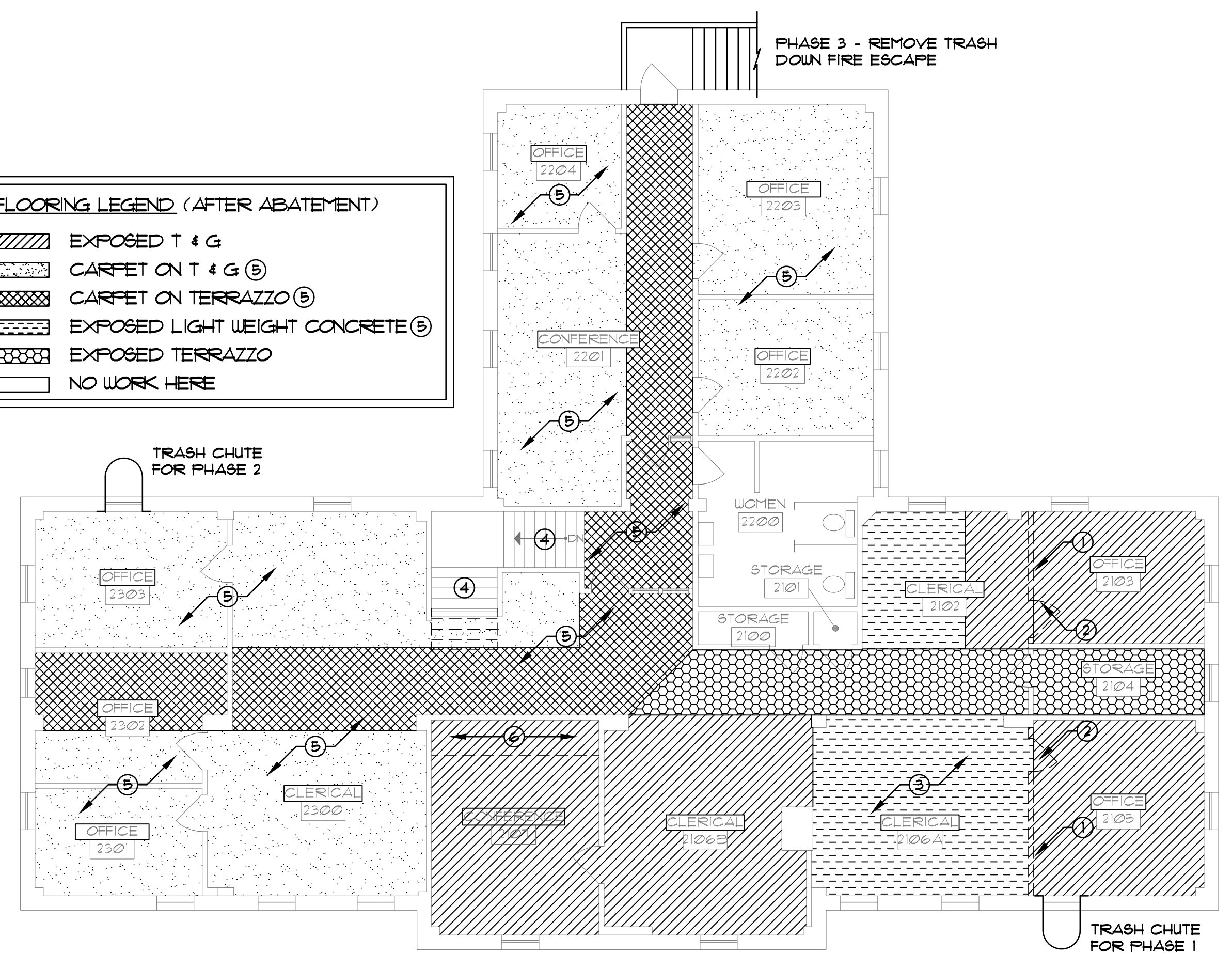
PROJECT PHASE:
BID DOCUMENTS
AAIC PROJECT NUMBER:
16011
SHEET NUMBER:

OF 10 SHEETS
GRAPHIC SCALE: 1/16" = 1'-0"
FIGURES:

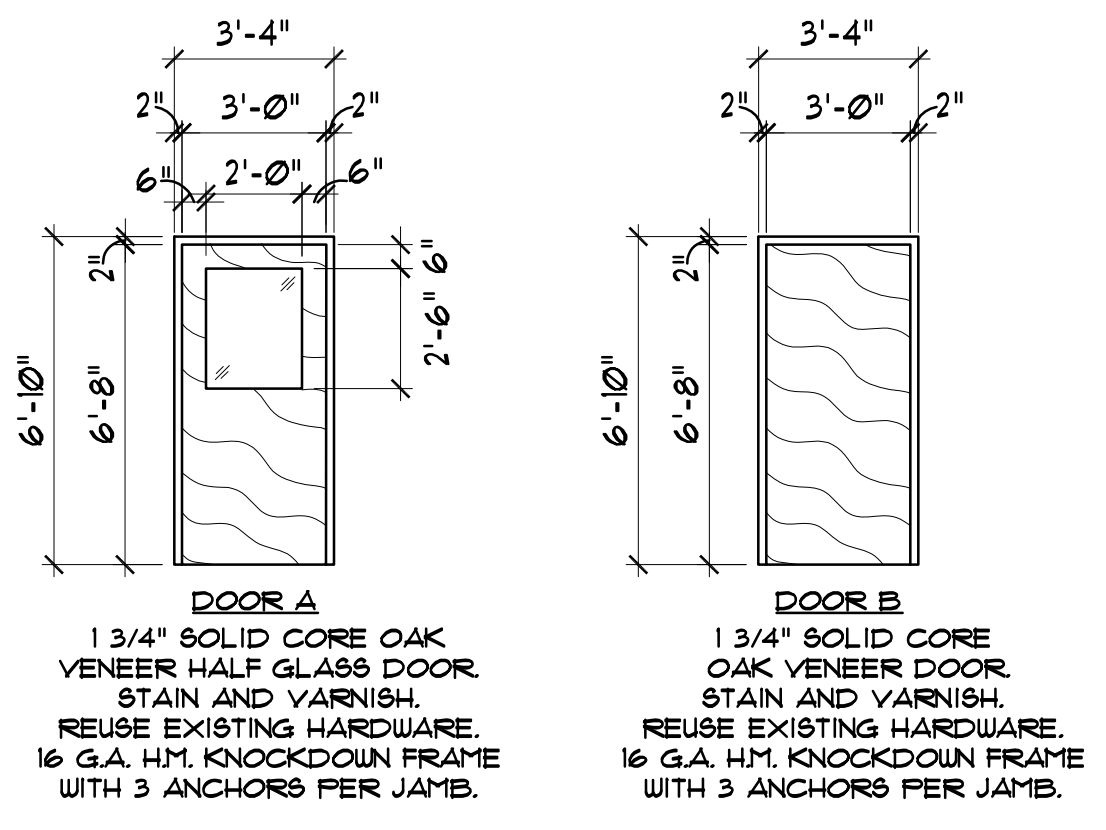
J:\1/2 cad\1/2 16011 - SUE Admin Bldg 273-2nd Floor Upgrade\1/2 SUBMITTALS\1/2 - BID SET\1/2 DUGS\1/2 A1 PHASING PLAN & ROOM FINISH.dwg Thu 22-Dec-2016 - 09:59AM

FLOORING LEGEND (AFTER ABATEMENT)

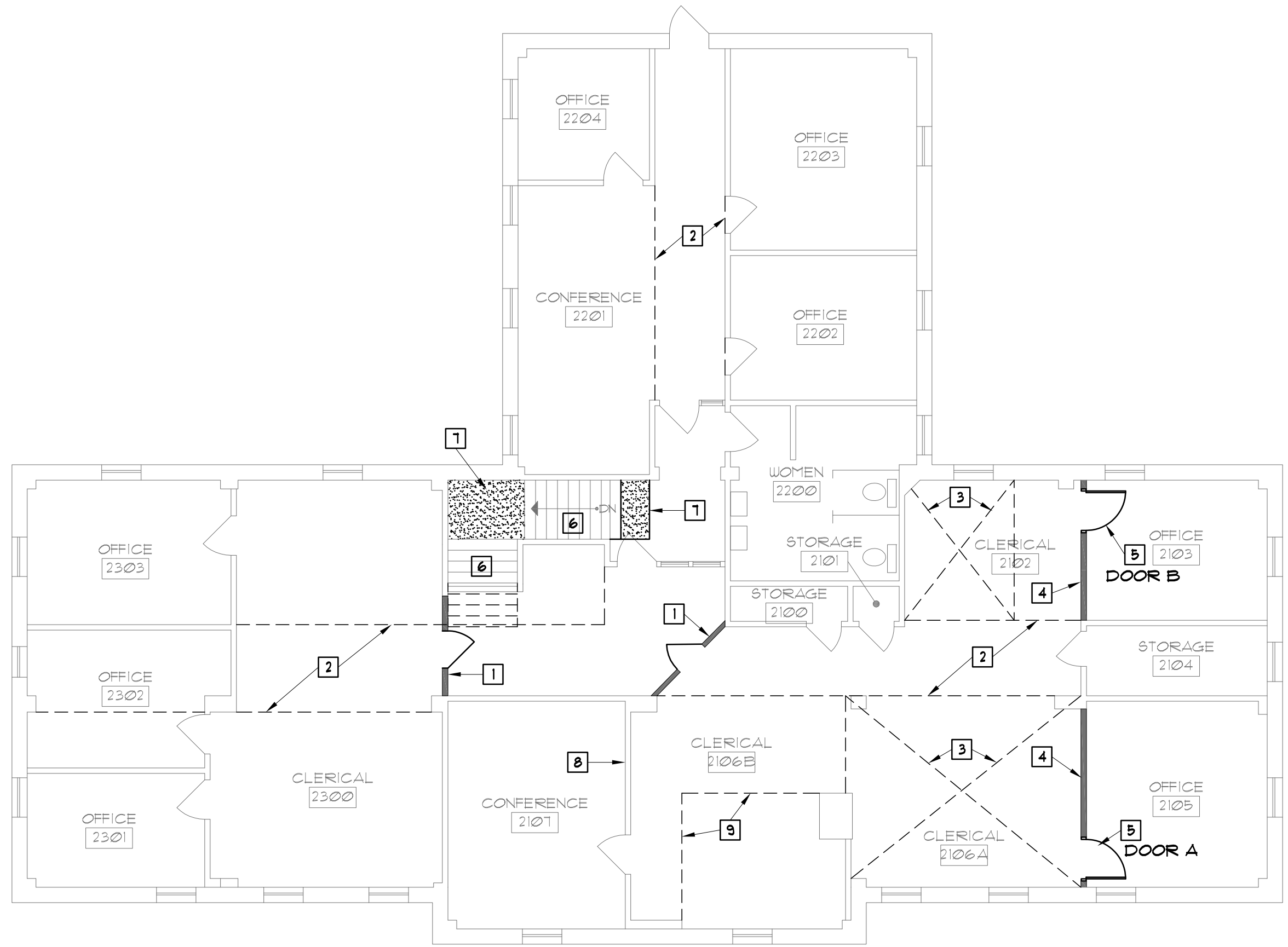
	EXPOSED T & G
	CARPET ON T & G (B)
	CARPET ON TERRAZZO (B)
	EXPOSED LIGHT WEIGHT CONCRETE (B)
	EXPOSED TERRAZZO
	NO WORK HERE



1 DEMOLITION FLOOR PLAN
 A2 SCALE: 1/8" = 1'-0"
 NORTH



2 DOOR TYPES
 A2 SCALE: 1/4" = 1'-0"



3 NEW WORK FLOOR PLAN
 A2 SCALE: 1/8" = 1'-0"
 NORTH

DEMOLITION NOTES:

- ABATEMENT CONTRACTOR TO REMOVE WALL PARTITION.
- ABATEMENT CONTRACTOR TO REMOVE AND SALVAGE DOOR AND ALL HARDWARE. GIVE TO GENERAL CONTRACTOR FOR REINSTALLATION.
- GENERAL CONTRACTOR TO REMOVE APPROXIMATELY 1 1/2" OF LIGHT WEIGHT CONCRETE IN THIS AREA.
- REMOVE EXISTING RUBBER TREADS, TERRAZZO RISERS TO REMAIN.
- REMOVE EXISTING CARPET.
- CASEWORK REMOVED BY OTHERS.

NEW WORK NOTES:

- TEMPORARY DUST PARTITION FOR PHASE 1 AND 2.
- EDGE OF EXISTING TERRAZZO UNDERLAYMENT TO REMAIN. FEATHER ADJACENT FLOOR TO MATCH TERRAZZO AS NEEDED WITH HYDRAULIC CEMENT.
- TAG SUBFLOOR TO BE REMOVED BY ABATEMENT CONTRACTOR. GENERAL CONTRACTOR TO REMOVE APPROXIMATELY 1 1/2" OF LIGHT WEIGHT CONCRETE AND INSTALL NEW 3/4" TAG PLYWOOD SUB FLOOR AND SELF-LEVELING HYDRAULIC CEMENT TO BRING THE FLOOR LEVEL UP TO SURROUNDING LEVEL - APPROXIMATELY 1 1/2" THICK.
- NEW 2X4 @ 16" O.C. STUD PARTITION WITH 5/8" FIRE CODE GYPSUM BOARD ON EACH SIDE.
- NEW WOOD DOOR IN NEW H.M. FRAME. REINSTALL EXISTING HARDWARE.
- REPLACE EXISTING RUBBER TREADS WITH NEW RUBBER TREADS WITH ANTI-SLIP NOSING STRIPS. INSTALL DURING NON BUSINESS HOURS - ALLOW FOR CURE TIME.
- NEW ADA TACTILE WARNING PADS.
- DO NOT PAINT OVER EXISTING PROJECTION SCREEN PAINTED SURFACE.
- EXISTING UNEVEN FLOOR. CONTRACTOR TO LEVEL OUT WITH HYDRAULIC CEMENT. ASSUME AN AVERAGE OF 3/4" THICK IN THIS AREA.

GENERAL NOTES:

- ALL EXISTING CONSTRUCTION / FINISHES DISTURBED DURING CONSTRUCTION SHALL BE RESTORED TO A CONDITION AT LEAST EQUAL IN MATERIAL AND APPEARANCE TO THAT WHICH EXISTED BEFORE CONSTRUCTION BEGAN.
- CONTRACTOR SHALL FIELD VERIFY ALL EXISTING DIMENSIONS AND CONDITIONS. NOTIFY ARCHITECT/ENGINEER OF ANY DISCREPANCIES WHICH MAY AFFECT THE OUTCOME OF THE WORK.
- DUE TO AGE OF BUILDING IT IS ASSUMED THAT EXISTING PAINTED SURFACES CONTAIN LEAD BASED PAINT. CONTRACTOR IS RESPONSIBLE FOR NOTIFYING ALL ON SITE PERSONNEL OF THIS POTENTIAL AND SHALL COMPLY WITH ALL APPLICABLE STATE AND FEDERAL REQUIREMENTS.
- EXISTING WALLS WHERE DOORS HAVE BEEN REMOVED ARE TO BE PATCHED AND PAINTED.
- WALLS TO RECEIVE PAINT ARE TO BE PREPARED, PATCHED AND PAINTED FROM CORNER TO CORNER.
- KEEP EXISTING SMOKE AND HEAT DETECTORS CONNECTED DURING CONSTRUCTION AND RE-USE IN NEW CEILING INSTALLATION.
- ALL WIRELESS ROUTERS, NETWORK CABLES, AND MISCELLANEOUS NETWORK EQUIPMENT TO REMAIN IN PLACE - SEE ELECTRICAL SHEETS FOR MORE INFORMATION.
- PAINT ALL WALL SURFACES, WOOD BASE BOARD, DOOR FRAMES, CASING, INTERIOR SIDE OF WINDOW SASH IN ALL AREAS IDENTIFIED ON THE ROOM FINISH SCHEDULE.

NO.	DATE	REVISIONS/REMARKS

CONSULTANT:
BRIC
 PARTNERSHIP, LLC
 CONSULTING ENGINEERS
 100 EAST WASHINGTON, SUITE 220
 BELLEVILLE, IL 62220
 TEL 618.277.5200
 FAX 618.277.5227

AAIC inc.
 One Design Mesa
 Collinsville, Illinois
 62234
 P 618.345.1270
 F 618.345.1282
 www.aaicinc.com



SCHOOL OF DENTAL MEDICINE
 213 - ADMINISTRATION BUILDING
 2ND FLOOR RENOVATIONS
 DRAWING: DEMOLITION & NEW WORK FLOOR PLANS

SIGNED: 12-22-16
 CARVIN E. MORRIS
 ARCHITECT
 001-010501
 EXPIRES: 11-30-2018
 DATE: 12/22/16

DRAWN: ALP	APP: MGN
CHECK: MGN	APP: MGN

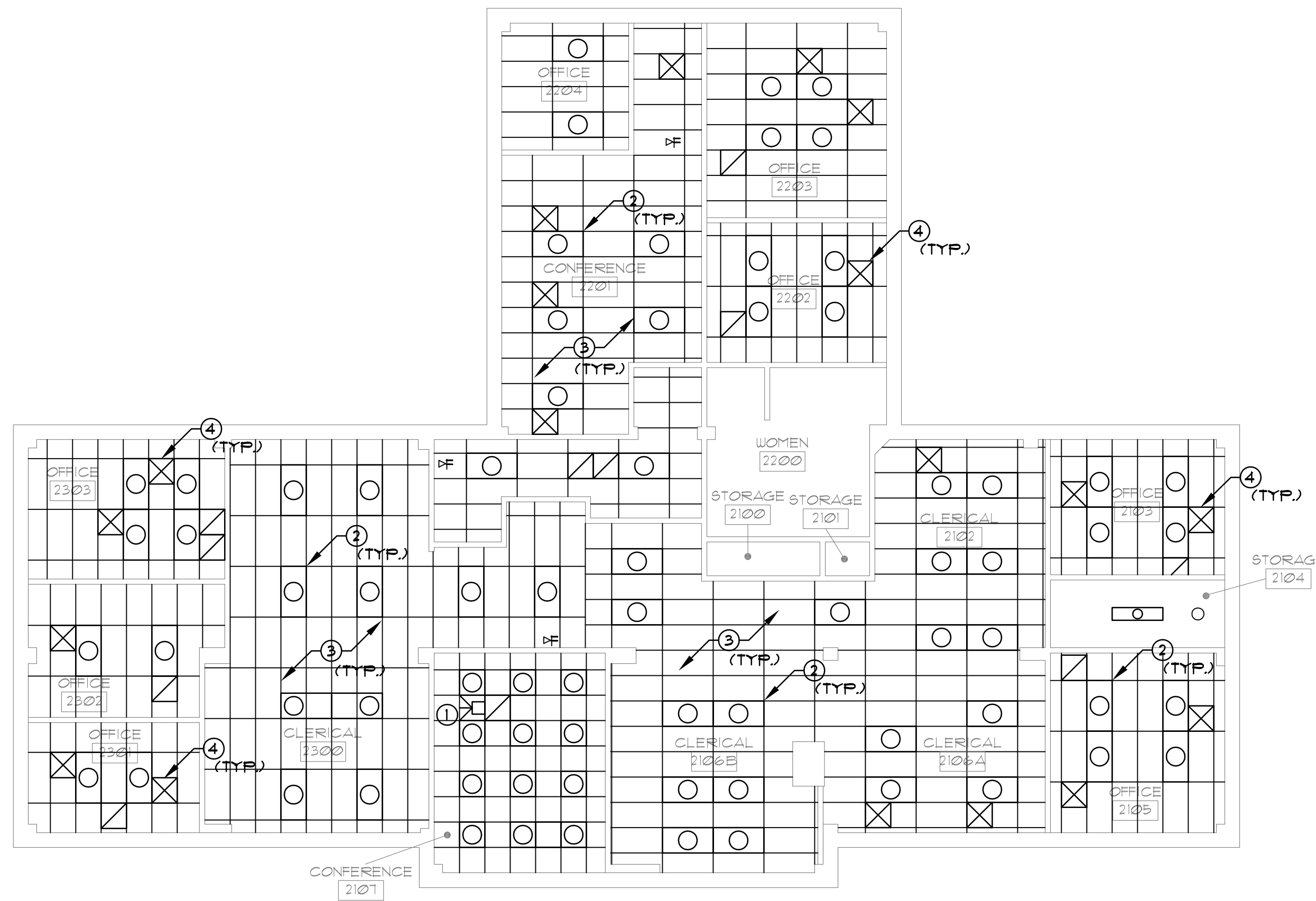
PROJECT PHASE:
BID DOCUMENTS
 AAIC PROJECT NUMBER:
 16011
 SHEET NUMBER:

A.2
 OF 10 SHEETS

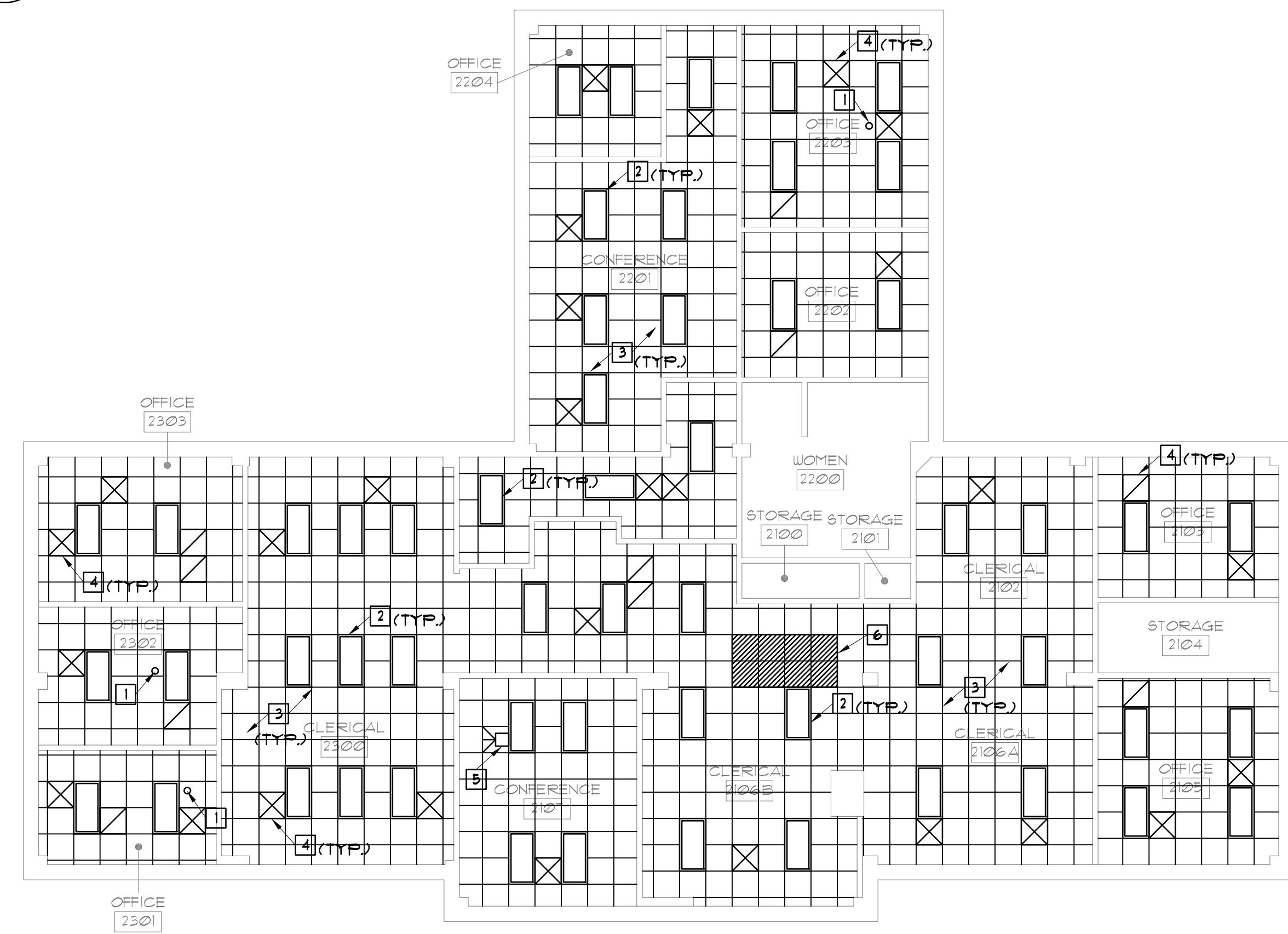
GRAPHIC SCALE: 1/16" = 1'-0" (0, 5, 10, 15, 20, 25, 30, 35, 40, 45, 50, 55, 60, 65, 70, 75, 80, 85, 90, 95, 100)
 ARCHITECTS: AAIC ARCHITECTS, INC. (0, 5, 10, 15, 20, 25, 30, 35, 40, 45, 50, 55, 60, 65, 70, 75, 80, 85, 90, 95, 100)
 PLANNERS: AAIC PLANNERS, INC. (0, 5, 10, 15, 20, 25, 30, 35, 40, 45, 50, 55, 60, 65, 70, 75, 80, 85, 90, 95, 100)
 INTERIORS: AAIC INTERIORS, INC. (0, 5, 10, 15, 20, 25, 30, 35, 40, 45, 50, 55, 60, 65, 70, 75, 80, 85, 90, 95, 100)
 HALF: 0, 5, 10, 15, 20, 25, 30, 35, 40, 45, 50, 55, 60, 65, 70, 75, 80, 85, 90, 95, 100
 3", 3 1/4", 3 1/2", 3 3/4", 4", 4 1/4", 4 1/2", 4 3/4", 5", 5 1/4", 5 1/2", 5 3/4", 6", 6 1/4", 6 1/2", 6 3/4", 7", 7 1/4", 7 1/2", 7 3/4", 8", 8 1/4", 8 1/2", 8 3/4", 9", 9 1/4", 9 1/2", 9 3/4", 10", 10 1/4", 10 1/2", 10 3/4", 11", 11 1/4", 11 1/2", 11 3/4", 12", 12 1/4", 12 1/2", 12 3/4", 13", 13 1/4", 13 1/2", 13 3/4", 14", 14 1/4", 14 1/2", 14 3/4", 15", 15 1/4", 15 1/2", 15 3/4", 16", 16 1/4", 16 1/2", 16 3/4", 17", 17 1/4", 17 1/2", 17 3/4", 18", 18 1/4", 18 1/2", 18 3/4", 19", 19 1/4", 19 1/2", 19 3/4", 20", 20 1/4", 20 1/2", 20 3/4", 21", 21 1/4", 21 1/2", 21 3/4", 22", 22 1/4", 22 1/2", 22 3/4", 23", 23 1/4", 23 1/2", 23 3/4", 24", 24 1/4", 24 1/2", 24 3/4", 25", 25 1/4", 25 1/2", 25 3/4", 26", 26 1/4", 26 1/2", 26 3/4", 27", 27 1/4", 27 1/2", 27 3/4", 28", 28 1/4", 28 1/2", 28 3/4", 29", 29 1/4", 29 1/2", 29 3/4", 30", 30 1/4", 30 1/2", 30 3/4", 31", 31 1/4", 31 1/2", 31 3/4", 32", 32 1/4", 32 1/2", 32 3/4", 33", 33 1/4", 33 1/2", 33 3/4", 34", 34 1/4", 34 1/2", 34 3/4", 35", 35 1/4", 35 1/2", 35 3/4", 36", 36 1/4", 36 1/2", 36 3/4", 37", 37 1/4", 37 1/2", 37 3/4", 38", 38 1/4", 38 1/2", 38 3/4", 39", 39 1/4", 39 1/2", 39 3/4", 40", 40 1/4", 40 1/2", 40 3/4", 41", 41 1/4", 41 1/2", 41 3/4", 42", 42 1/4", 42 1/2", 42 3/4", 43", 43 1/4", 43 1/2", 43 3/4", 44", 44 1/4", 44 1/2", 44 3/4", 45", 45 1/4", 45 1/2", 45 3/4", 46", 46 1/4", 46 1/2", 46 3/4", 47", 47 1/4", 47 1/2", 47 3/4", 48", 48 1/4", 48 1/2", 48 3/4", 49", 49 1/4", 49 1/2", 49 3/4", 50", 50 1/4", 50 1/2", 50 3/4", 51", 51 1/4", 51 1/2", 51 3/4", 52", 52 1/4", 52 1/2", 52 3/4", 53", 53 1/4", 53 1/2", 53 3/4", 54", 54 1/4", 54 1/2", 54 3/4", 55", 55 1/4", 55 1/2", 55 3/4", 56", 56 1/4", 56 1/2", 56 3/4", 57", 57 1/4", 57 1/2", 57 3/4", 58", 58 1/4", 58 1/2", 58 3/4", 59", 59 1/4", 59 1/2", 59 3/4", 60", 60 1/4", 60 1/2", 60 3/4", 61", 61 1/4", 61 1/2", 61 3/4", 62", 62 1/4", 62 1/2", 62 3/4", 63", 63 1/4", 63 1/2", 63 3/4", 64", 64 1/4", 64 1/2", 64 3/4", 65", 65 1/4", 65 1/2", 65 3/4", 66", 66 1/4", 66 1/2", 66 3/4", 67", 67 1/4", 67 1/2", 67 3/4", 68", 68 1/4", 68 1/2", 68 3/4", 69", 69 1/4", 69 1/2", 69 3/4", 70", 70 1/4", 70 1/2", 70 3/4", 71", 71 1/4", 71 1/2", 71 3/4", 72", 72 1/4", 72 1/2", 72 3/4", 73", 73 1/4", 73 1/2", 73 3/4", 74", 74 1/4", 74 1/2", 74 3/4", 75", 75 1/4", 75 1/2", 75 3/4", 76", 76 1/4", 76 1/2", 76 3/4", 77", 77 1/4", 77 1/2", 77 3/4", 78", 78 1/4", 78 1/2", 78 3/4", 79", 79 1/4", 79 1/2", 79 3/4", 80", 80 1/4", 80 1/2", 80 3/4", 81", 81 1/4", 81 1/2", 81 3/4", 82", 82 1/4", 82 1/2", 82 3/4", 83", 83 1/4", 83 1/2", 83 3/4", 84", 84 1/4", 84 1/2", 84 3/4", 85", 85 1/4", 85 1/2", 85 3/4", 86", 86 1/4", 86 1/2", 86 3/4", 87", 87 1/4", 87 1/2", 87 3/4", 88", 88 1/4", 88 1/2", 88 3/4", 89", 89 1/4", 89 1/2", 89 3/4", 90", 90 1/4", 90 1/2", 90 3/4", 91", 91 1/4", 91 1/2", 91 3/4", 92", 92 1/4", 92 1/2", 92 3/4", 93", 93 1/4", 93 1/2", 93 3/4", 94", 94 1/4", 94 1/2", 94 3/4", 95", 95 1/4", 95 1/2", 95 3/4", 96", 96 1/4", 96 1/2", 96 3/4", 97", 97 1/4", 97 1/2", 97 3/4", 98", 98 1/4", 98 1/2", 98 3/4", 99", 99 1/4", 99 1/2", 99 3/4", 100", 100 1/4", 100 1/2", 100 3/4

J:\cadd\1\6011 - 51UE Admin Bldg 213-2nd Floor Upgrade\SUBMITTALS\16 - BID SET\1\DWG\1\2-A2 FLOOR PLANS.dwg Thu 22-Dec-2016 - 09:56AM

J:\1\cadd\1\16011 - 51UE Admin Bldg 213-2nd Floor Upgrade\1\SUBMITTALS\1\6 - BID SET\1\DWG\1\2\A.3 REFLECTED CEILING PLANS.dwg Thu 22-Dec-2016 - 09:56AM



1 DEMOLITION REFLECTED CEILING PLAN
A3 SCALE: 1/8" = 1'-0" NORTH



2 NEW WORK REFLECTED CEILING PLAN
A3 SCALE: 1/8" = 1'-0" NORTH

DEMOLITION NOTES:

- 1 EXISTING PROJECTOR TO BE REMOVED BY THE OWNER MOUNT TO REMAIN.
- 2 REMOVE EXISTING LIGHTING - SEE ELECTRICAL DEMO SHEETS.
- 3 REMOVE EXISTING SUSPENDED ACOUSTIC CEILING TILES AND GRID IN ALL AREAS IDENTIFIED ON ROOM FINISH SCHEDULE.
- 4 REMOVE EXISTING AIR DIFFUSERS AND SAVE FOR REUSE SEE MECHANICAL DEMO SHEETS.

NEW WORK NOTES:

- 1 SMOKE DETECTORS AND HEAT DETECTORS - SEE ELECTRICAL SHEETS.
- 2 PROVIDE LED LIGHTING - SEE ELECTRICAL SHEETS.
- 3 PROVIDE NEW 2' X 2' ACOUSTICAL PANEL CEILING SYSTEM.
- 4 PROVIDE DIFFUSERS AND RETURNS - SEE MECHANICAL SHEETS.
- 5 OWNER TO REINSTALL THE PROJECTOR.
- 6 EXISTING LADDER FOR ACCESSING ATTIC IS LOCATED IN THIS AREA CEILING LAYOUT SHALL BE INSTALLED SO THAT CEILING GRID MAIN RUNNER IS NOT IN THIS LOCATION.

GENERAL NOTES:

1. ALL EXISTING CONSTRUCTION / FINISHES DISTURBED DURING CONSTRUCTION SHALL BE RESTORED TO A CONDITION AT LEAST EQUAL IN MATERIAL AND APPEARANCE TO THAT WHICH EXISTED BEFORE CONSTRUCTION BEGAN.
2. CONTRACTOR SHALL FIELD VERIFY ALL EXISTING DIMENSIONS AND CONDITIONS. NOTIFY ARCHITECT/ENGINEER OF ANY DISCREPANCIES WHICH MAY AFFECT THE OUTCOME OF THE WORK.
3. DUE TO AGE OF BUILDING IT IS ASSUMED THAT EXISTING PAINTED SURFACES CONTAIN LEAD BASED PAINT. CONTRACTOR IS RESPONSIBLE FOR INFORMING ALL ON SITE PERSONNEL OF THIS POTENTIAL AND SHALL COMPLY WITH ALL APPLICABLE STATE AND FEDERAL REQUIREMENTS.
4. EXISTING WALLS WHERE DOORS HAVE BEEN REMOVED ARE TO BE PATCHED AND PAINTED.
5. WALLS TO RECEIVE PAINT ARE TO BE PREPARED, PATCHED AND PAINTED FROM CORNER TO CORNER.
6. KEEP EXISTING SMOKE AND HEAT DETECTORS CONNECTED DURING CONSTRUCTION AND RE-USE IN NEW CEILING INSTALLATION.
7. ALL WIRELESS ROUTERS, NETWORK CABLES, AND MISCELLANEOUS NETWORK EQUIPMENT TO REMAIN IN PLACE - SEE ELECTRICAL SHEETS FOR MORE INFORMATION.
8. PAINT ALL WALL SURFACES, WOOD BASE BOARD, DOOR FRAMES, CASING, INTERIOR SIDE OF WINDOW SASH IN ALL AREAS IDENTIFIED ON THE ROOM FINISH SCHEDULE.

NO.	DATE:	REVISIONS:	REMARKS:

CONSULTANT:
BRIC
PARTNERSHIP, LLC
CONSULTING ENGINEERS
100 EAST WASHINGTON, SUITE 220
BELLEVILLE, IL 62220
TEL 618.277.5200
FAX 618.277.5227

AAIC inc.
One Design Mesa
Collinsville, Illinois
62234
P 618.345.1270
F 618.345.1282
www.aaicinc.com



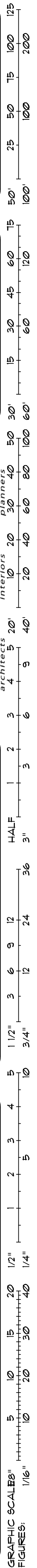
SCHOOL OF DENTAL MEDICINE
213 - ADMINISTRATION BUILDING
2ND FLOOR RENOVATIONS
DRAWING: DEMOLITION & NEW WORK
REFLECTED CEILING PLANS

SIGNED: 12-22-16
CARVIN E. MORRIS
REGISTERED ARCHITECT
001-010501
EXPIRES: 11-30-2018

DATE: 12/22/16
DRAWN: ALP APP: MGN
CHECK: MGN APP: MGN

PROJECT PHASE:
BID DOCUMENTS
AAIC PROJECT NUMBER:
16011
SHEET NUMBER:

A.3
OF 10 SHEETS



ELECTRICAL ABBREVIATIONS

A.F.F.	ABOVE FINISHED FLOOR
C	IN STATEMENT, IS ABBREVIATION FOR "CONDUIT"
CKT	CIRCUIT
CLG	CEILING
E.C.	AS SPECIFIED IN DIVISION 26
EX	AT DEVICE, INDICATES DEVICE IS EXISTING
EXT	EXTERIOR GRADE DEVICE. PROVIDE DEVICE IN WEATHERPROOF BACKBOX (WITH GASKET) AND SS HARDWARE
F.B.O.	FURNISHED BY OTHERS
GFIP	GROUND FAULT INTERRUPT PROTECTION
M.C.	AS SPECIFIED IN DIVISION 23 OR "H", "V", OR "M" SERIES DRAWINGS
NIC	NOT IN CONTRACT
NL	NIGHT LIGHT
OC	6" OVER (ABOVE) COUNTER LEVEL
P.C.	AS SPECIFIED IN DIVISION 22 OR "P" SERIES DRAWINGS
TGB	TELECOM GROUND BAR
U.N.O.	UNLESS NOTED OTHERWISE
WP	WEATHERPROOF (NEMA 3R)

NOTE: NOT ALL SYMBOLS OR ABBREVIATIONS MAY BE USED.

ELECTRICAL SYMBOLS

	CEILING-MOUNTED JUNCTION BOX (4"x4"x1-1/2" MIN.)
	WALL-MOUNTED JUNCTION BOX (4"x4"x1-1/2" MIN.)
	PANEL BOARD LOCATION ON PLANS. "CL21" INDICATES DESIGNATION.
	SHEET KEYED NOTE. "1" INDICATES NOTE NUMBER.
	DIGITAL LIGHTING CONTROL WALLSTATION. MOUNT AT 48" A.F.F. U.N.O. "CR" INDICATES WALLSTATION DESIGNATION. SEE LIGHTING CONTROL SCHEDULE FOR ADDITIONAL INFORMATION.
	SHEET DEMOLITION KEYED NOTE. "2" INDICATED NOTE #
	FLOOR BOX LOCATION.
	CIRCUIT CONDUIT ROUTING. "L" INDICATES (1) GROUND CONDUCTOR, (1) NEUTRAL CONDUCTOR, AND (2) PHASE CONDUCTORS RESPECTIVELY. "*" INDICATES ISOLATED GROUND CONDUCTOR. ALL CONDUCTORS SHALL BE #12 AWG MIN. U.N.O.
	CIRCUIT/CONDUIT "HOMERUN"

ELECTRICAL SYMBOLS

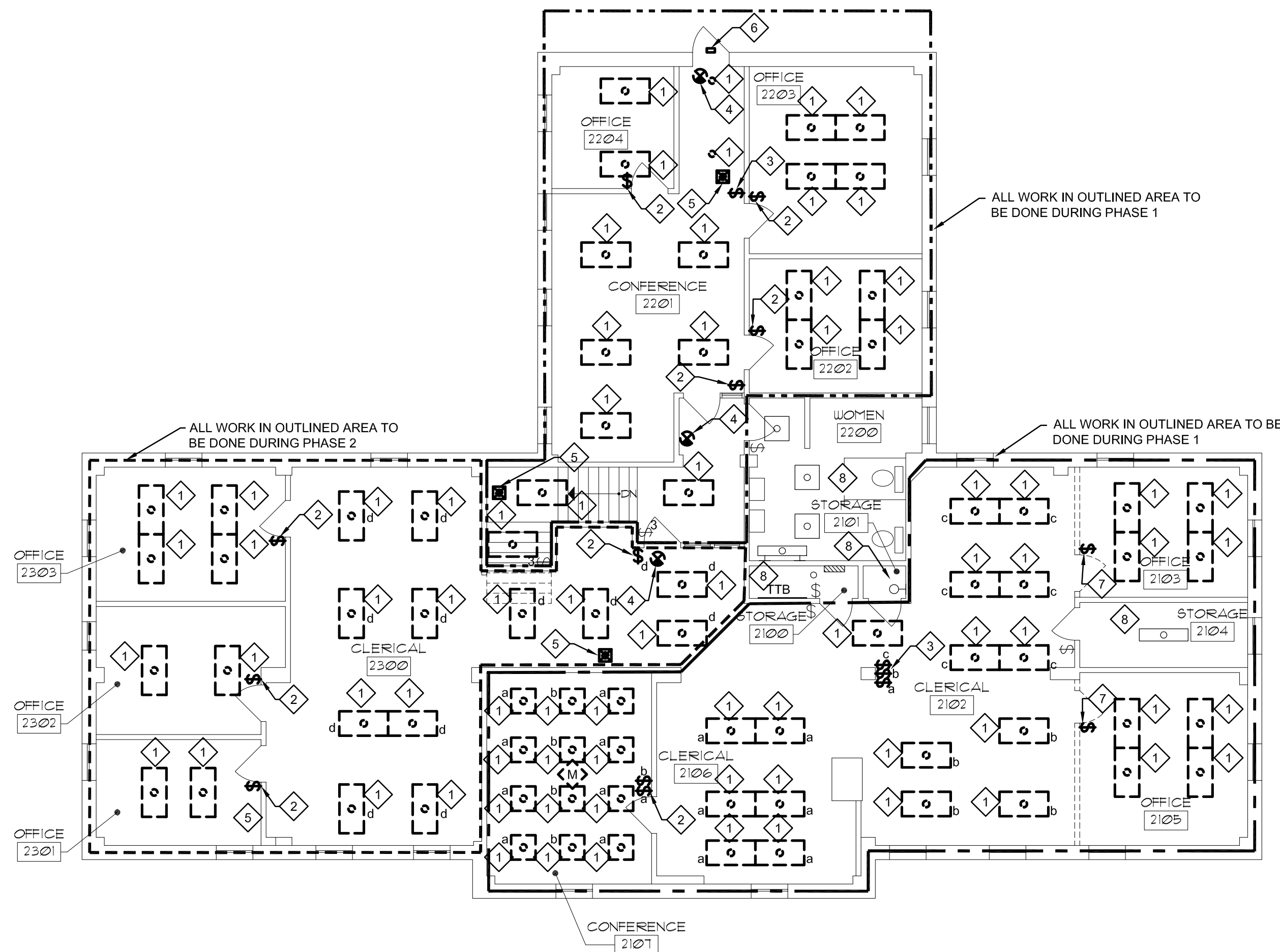
	LIGHT FIXTURE. "B" INDICATES FIXTURE TYPE. "H21-13" INDICATES PANEL AND CIRCUIT. "a" INDICATES SWITCHLEG. "NL" INDICATES NIGHTLIGHT LOCATION. PROVIDE UNSWITCHED HOT TO FIXTURE LOCATION. "S" PREFIX INDICATES AN EXTERIOR FIXTURE. "DZ" INDICATES DAYLIGHT ZONE FIXTURE IS IN. TYPICAL OF ALL LIGHT FIXTURES. SEE LIGHT FIXTURE SCHEDULE FOR MORE INFORMATION.
	DOWNLIGHT
	GRID-MOUNTED LIGHT FIXTURE. SIZE AS INDICATED.
	PROVIDE FIXTURE WITH EMERGENCY BATTERY BACK-UP. SYMBOL TYPICAL OF ALL LIGHT FIXTURES. PROVIDE UNSWITCHED PHASE CONDUCTOR TO EACH EMERGENCY BATTERY ON SAME PHASE AS LIGHT FIXTURE.
	WALL-MOUNTED LIGHT FIXTURE
	EXIT LIGHT FIXTURE. "I" INDICATES WALL-MOUNTED. PROVIDE WITH ARROWS AS INDICATED. SHADING INDICATES FACE DIRECTION. SEE PLANS FOR SINGLE- OR DOUBLE-FACE SIGNS.
	EXTERIOR WALL PACK. SEAL FIXTURE AT WALL WITH NON-HARDENING WEATHERPROOF SEALANT.
	OCCUPANCY SENSOR. "L" INDICATES WALL OR CEILING MOUNTED. ARROW INDICATES CANOPY-MOUNTED SENSOR WITH DIRECTIONAL COVERAGE. "A" INDICATES SENSOR TYPE (SEE OCCUPANCY SENSOR SCHEDULE).
	CEILING MOUNTED PHOTO CELL. "DZ1" INDICATES DAYLIGHT ZONE CONTROLLED BY PHOTO CELL
	FIRE ALARM RATE-OF-RISE HEAT DETECTOR LOCATION
	FIRE ALARM SMOKE DETECTOR LOCATION

KEYED NOTES

- 1 DISCONNECT AND REMOVE LIGHT FIXTURE. ASSOCIATED CIRCUIT TO REMAIN IN ROOM FOR CONNECTION TO NEW FIXTURES. SEE SHEET E1.0 FOR MORE INFORMATION.
- 2 DISCONNECT AND REMOVE LIGHT SWITCH AND WIRING. ASSOCIATED BOX AND CONDUIT TO REMAIN FOR NEW LOW VOLTAGE SWITCHES. SEE SHEET E1.0 FOR MORE INFORMATION.
- 3 DISCONNECT AND REMOVE LIGHT SWITCH AND WIRING. ASSOCIATED BOX AND CONDUIT TO REMAIN. PROVIDE COVER PLATE TO MATCH ROOM FINISHES.
- 4 EXISTING EXIT SIGN TO BE DISCONNECT AND RETAIN TO ALLOW FOR RE-INSTALLATION. SEE NEW WORK PLANS FOR MORE INFORMATION. PROTECT SIGN DURING ALL PHASES OF CONSTRUCTION.
- 5 DISCONNECT AND REMOVE EXISTING EMERGENCY FIXTURE AND ALL ASSOCIATED WIRING AND CONDUIT. MAINTAIN CONTINUITY TO ALL EXISTING TO REMAIN DEVICES, BEYOND FIXTURE.
- 6 DISCONNECT AND REMOVE EXISTING WALL PACK. RETAIN EXISTING CIRCUIT AND ASSOCIATED BOX AND CONDUIT. MAINTAIN CONTINUITY TO ALL EXISTING TO REMAIN DEVICES, BEYOND DEVICE.
- 7 MAKE DEVICE SAFE FOR REMOVAL. DEVICE REMOVAL TO BE DONE BY ABATEMENT CONTRACTOR. COORDINATE SCHEDULE WITH THE ABATEMENT CONTRACTOR. MAINTAIN CONTINUITY TO ALL EXISTING TO REMAIN DEVICES, BEYOND DEVICE.
- 8 NO ELECTRICAL DEMOLITION WORK IN ROOM.

GENERAL NOTES

1. ALL EXISTING CONDITIONS INDICATED WITHIN THESE DOCUMENTS ARE BASED ON AVAILABLE INFORMATION AND CASUAL FIELD OBSERVATIONS. VERIFY EXACT FIELD CONDITIONS (QUANTITIES, LOCATIONS, ETC) PRIOR TO BEGINNING WORK.
2. ALL DEVICES AND EQUIPMENT SHOWN BOLD AND DASHED ON THIS SHEET ARE TO BE DISCONNECTED, REMOVED AND DISPOSED OF BY THE EC, UNLESS OTHERWISE INDICATED. THE OWNER SHALL BE GIVEN SALVAGE RIGHTS TO ALL EQUIPMENT INDICATED FOR REMOVAL WITHOUT RE-INSTALLATION. EC SHALL DISPOSE OF ALL UN-SALVAGED EQUIPMENT IN AN ENVIRONMENTALLY ACCEPTABLE MANNER.
3. ALL DEVICES SHOWN LIGHT AND SOLID ARE TO REMAIN, UNLESS OTHERWISE INDICATED.
4. PROTECT ALL FINISHES NOT SCHEDULED FOR DEMOLITION.
5. CONTRACTOR SHALL FOLLOW THE PHASING SCHEDULE SET BY THE SCHOOL AND THE ARCHITECT. SEE ARCHITECTURAL SHEET A.1 FOR PHASING PLAN.
6. CONTRACTOR SHALL MAINTAIN CONTINUITY TO ALL EXISTING TO REMAIN DEVICES, BEYOND TO REMOVED DEVICE(S).



ELECTRICAL DEMOLITION PLAN
 SCALE: 1/8" = 1'-0"
 NORTH

NO.	DATE	REVISIONS/REMARKS

CONSULTANT:
BRIC
 PARTNERSHIP, LLC
 CONSULTING ENGINEERS
 100 EAST WASHINGTON, SUITE 220
 BELLEVILLE, ILLINOIS 62220
 TEL. 618.277.5200
 FAX. 618.277.5227

AAIC inc.
 One Design Mesa
 Collinsville, Illinois
 62234
 P 618.345.1270
 F 618.345.1282
 www.aaicinc.com



SCHOOL OF DENTAL MEDICINE
 213 - ADMINISTRATION BUILDING
 2ND FLOOR RENOVATIONS
 DRAWING: **ELECTRICAL DEMOLITION PLAN**

SIGNED: 12-22-16

DATE:	12-22-2016
DRAWN:	RTM
APP:	ERR
CHECK:	ERR
APP:	ERR

PROJECT PHASE:
BID DOCUMENTS
 AAIC PROJECT NUMBER:
16011
 SHEET NUMBER:

DE1.0
 OF 10 SHEETS
 GRAPHIC SCALE: 1/8" = 1'-0"
 1/16" FIGURES
 COPYRIGHT 2009 BY AAIC, INC.

M:\2008\1-10\1\2\Cad\1\2\Elec\1\2\DE1.dwg Wed 21-Dec-2016 - 05:41PM

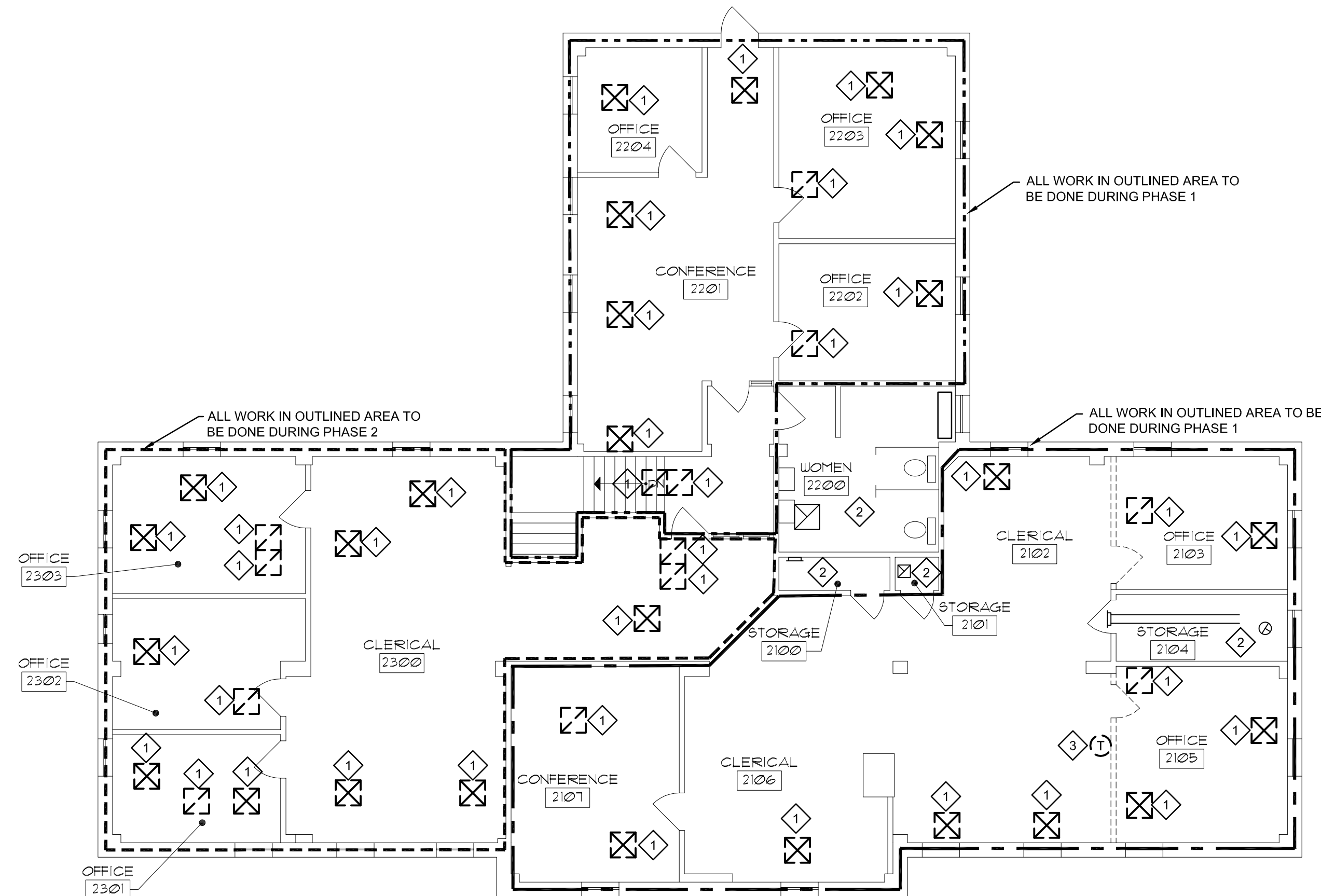
VENTILATION SYMBOLS		ABBREVIATIONS	
	SUPPLY AIR DEVICE	F.F.E.	FINISH FLOOR ELEVATION
	RETURN AIR DEVICE	A.F.F.	ABOVE FINISH FLOOR
	THERMOSTAT	T.E.	TOP ELEVATION
		B.E.	BOTTOM ELEVATION
		F.L.	FLOW LINE
		INV.	INVERT ELEVATION
		CL.	CENTER LINE
		G.C.C.	GENERAL CONSTRUCTION CONTRACTOR
		H.A.C.	HEATING & AIR CONDITIONING CONTRACTOR
		P.C.	PLUMBING CONTRACTOR
		E.C.	ELECTRICAL CONTRACTOR
		A.C.S.	AUTOMATIC CONTROL SUB-CONTRACTOR
		F.P.C.	FIRE PROTECTION CONTRACTOR
		H.S.C.	HALON SUB-CONTRACTOR
		K.E.C.	KITCHEN EQUIPMENT CONTRACTOR
		H.C.	HEATING CONTRACTOR
		V.C.	VENTILATION CONTRACTOR
(AIR DEVICE TYPE) - (SCHEDULE NUMBER) AIR DEVICE TYPE: (AIR FLOW IN CFM) S - SUPPLY DIFFUSER R - RETURN GRILLE E - EXHAUST GRILLE T - TRANSFER GRILLE			
MISCELLANEOUS SYMBOLS			
	(DETAIL NUMBER) DETAIL DESIGNATION (SHEET NUMBER WHERE DETAIL IS FOUND)		KEYED NOTES
			REVISIONS
			NEW CONNECTION
NOTE: NOT ALL SYMBOLS OR ABBREVIATIONS MAY BE USED.			

GENERAL NOTES (ALL MECHANICAL SHEETS)

- THESE PLANS ARE DIAGRAMMATIC IN NATURE SINCE THEY REFLECT ONLY THE AVAILABLE INFORMATION OBTAINED FROM EXISTING PLANS, SPECIFICATIONS, AND FIELD SURVEYS. THE EXACT LOCATION OF EXISTING DUCTWORK, PIPING, AND EQUIPMENT MAY DEVIATE FROM THE LOCATION INDICATED ON THE DRAWINGS. THE CONTRACTOR SHALL BE PREPARED TO MAKE SOME ALTERATIONS TO NEW AND/OR EXISTING SERVICES TO FIT ACTUAL JOB CONDITIONS.
- THE SPACE ALLOWED FOR MECHANICAL (HVAC, PLUMBING, FIRE PROTECTION) AND ELECTRICAL WORK ABOVE THE SUSPENDED CEILING IS CRITICAL AND REQUIRES COORDINATION BETWEEN TRADES. CONTRACTORS SHALL THOROUGHLY FAMILIARIZE THEMSELVES WITH THE ARCHITECTURAL, STRUCTURAL, MECHANICAL, AND ELECTRICAL DRAWINGS PRIOR TO FABRICATION OR INSTALLATION OF ANY MATERIALS. DUCTWORK SHALL BE HUNG AS CLOSE AS POSSIBLE TO THE STRUCTURE ABOVE UNLESS INDICATED OTHERWISE. REWORK OF PIPING, DUCTWORK, EQUIPMENT LOCATION, CONDUIT, ETC. AS A RESULT OF POOR PLANNING, COORDINATION, OR SCHEDULING SHALL BE THE RESPONSIBILITY OF THE CONTRACTOR.
- ANY HOLES LEFT IN EXISTING WALL CONSTRUCTION DUE TO DEMOLITION OR NEW WORK SHALL BE PATCHED TO MATCH EXISTING CONDITIONS.
- INSTALL H.V.A.C. SYSTEM IN ACCORDANCE WITH ALL STATE AND LOCAL CODES.
- ALL ITEMS INCLUDED ON THESE DRAWINGS AND THE SPECIFICATIONS SHALL BE INCLUDED IN THE CONTRACTOR'S BID. IF THE CONTRACTOR DOES NOT CLEARLY UNDERSTAND THESE PLANS OR IS NOT SURE OF THEIR MEANING, THE CONTRACTOR SHOULD OBTAIN THE ENGINEER'S WRITTEN EXPLANATION AND INTERPRETATION PRIOR TO BID TIME. THE CONTRACTOR WILL BE HELD TO THE INTERPRETATION OF THE ENGINEER.
- ALL DUCTWORK SHALL BE CONSTRUCTED AND INSTALLED PER THE LATEST VERSION OF THE S.M.A.C.N.A. H.V.A.C. DUCT CONSTRUCTION STANDARDS, UNLESS SPECIFIED MORE STRINGENTLY IN THESE CONSTRUCTION DOCUMENTS.
- ALL NEW DUCT CONNECTIONS TO EXISTING DUCTWORK SHALL BE SEALED AIRTIGHT.
- THE CONTRACTOR SHALL COORDINATE SYSTEM SHUT-DOWNS WITH THE OWNER. PROVIDE A MINIMUM TWO DAY NOTICE PRIOR TO ANY SYSTEM SHUT-DOWN.
- INSTALL ALL DEVICES, DUCTWORK, ETC., LEVEL AND PLUMB.
- WHERE AIR DEVICES ARE INDICATED TO BE REINSTALLED, CONTRACTOR SHALL PUSH AIR DEVICE AND ASSOCIATED DUCTWORK ABOVE THE CEILING AND PROTECT UNTIL READY FOR REINSTALLATION. CONTRACTOR SHALL INFORM BOTH A/E AND GENERAL CONTRACTOR OF DEFECTS PRIOR TO DEMOLITION. ANY DEFECT AFTER THAT POINT WILL BE CONTRACTOR'S RESPONSIBILITY TO REPAIR OR REPLACE AT OWNER'S DISCRETION.
- CONTRACTOR SHALL FOLLOW THE SCHEDULE SET BY THE SCHOOL AND THE ARCHITECT. SEE ARCHITECTURAL SHEET A.1 FOR PHASING SCHEDULE.

KEYED NOTES

- AIR DIFFUSER TO BE PUSHED UP ABOVE EXISTING CEILING. AIR DIFFUSER TO BE REINSTALLED IN NEW CEILING GRID SEE NEW WORK SHEETS FOR MORE INFORMATION. COVER AND PROTECT DIFFUSER DURING CONSTRUCTION.
- NO MECHANICAL DEMOLITION WORK IN ROOM.
- EXISTING THERMOSTAT TO BE REMOVED FROM WALL AND RETAINED. THERMOSTAT TO MAINTAIN CONTINUITY TO EQUIPMENT. PROTECT THERMOSTAT DURING ALL PHASES OF CONSTRUCTION. SEE SHEET M1.0 FOR MORE INFORMATION. WALL TO BE REMOVED BY ABATEMENT CONTRACTOR. COORDINATE SCHEDULE WITH THE ABATEMENT CONTRACTOR.



A3 MECHANICAL DEMOLITION PLAN
DM1.0 SCALE: 1/8" = 1'-0"
NORTH

NO.	DATE	REVISIONS	REMARKS

CONSULTANT:

BRIC
PARTNERSHIP, LLC
CONSULTING ENGINEERS

100 EAST WASHINGTON, SUITE 220
BELLEVILLE, IL 62220
TEL 618.271.5200
FAX 618.271.5227

AAIC inc.
One Design Mesa
Collinsville, Illinois
62234
P 618.345.1270
F 618.345.1282
www.aaicinc.com



SCHOOL OF DENTAL MEDICINE
213 - ADMINISTRATION BUILDING
2ND FLOOR RENOVATIONS

DRAWING:
MECHANICAL DEMOLITION PLAN

SIGNED: 12-22-16
ERIC R. ROGERS
082-06065
REGISTERED PROFESSIONAL ENGINEER OF ILLINOIS
EXPIRES: 11-30-2017

DATE: 12-22-2016

DRAWN: RTM	APP: ERR
CHECK: ERR	APP: ERR

PROJECT PHASE: BID DOCUMENTS

AAIC PROJECT NUMBER: 16011

SHEET NUMBER:

DM1.0

OF 10 SHEETS

GRAPHIC SCALE: 1/16" = 1'-0"
FIGURES: 1 2 3 4 5 6 7 8 9 10 11 12 13 14 15 16 17 18 19 20 21 22 23 24 25 26 27 28 29 30 31 32 33 34 35 36 37 38 39 40 41 42 43 44 45 46 47 48 49 50 51 52 53 54 55 56 57 58 59 60 61 62 63 64 65 66 67 68 69 70 71 72 73 74 75 76 77 78 79 80 81 82 83 84 85 86 87 88 89 90 91 92 93 94 95 96 97 98 99 100

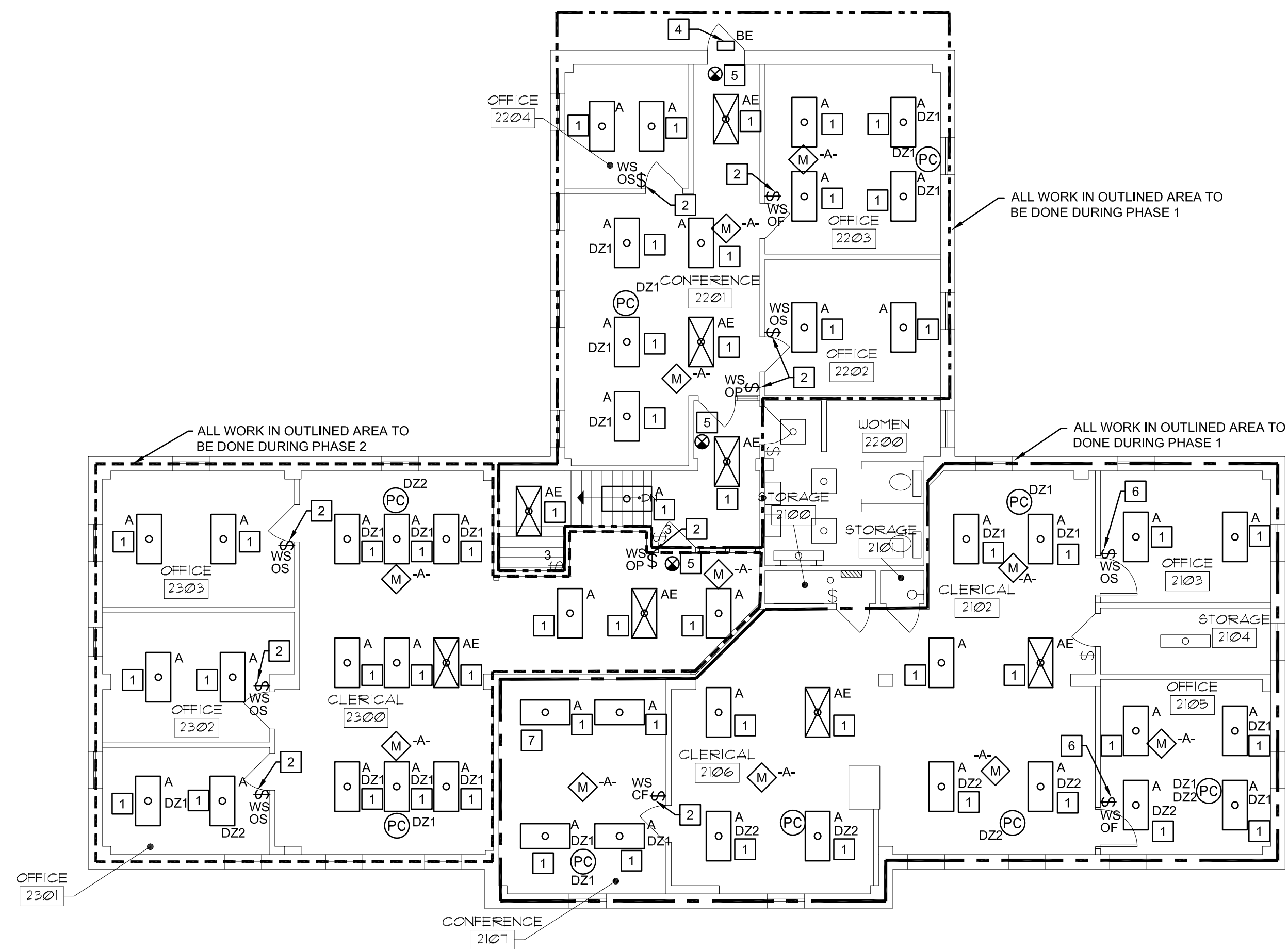
1/16" = 1'-0"
FIGURES: 1 2 3 4 5 6 7 8 9 10 11 12 13 14 15 16 17 18 19 20 21 22 23 24 25 26 27 28 29 30 31 32 33 34 35 36 37 38 39 40 41 42 43 44 45 46 47 48 49 50 51 52 53 54 55 56 57 58 59 60 61 62 63 64 65 66 67 68 69 70 71 72 73 74 75 76 77 78 79 80 81 82 83 84 85 86 87 88 89 90 91 92 93 94 95 96 97 98 99 100

M:\2008T-10\1\2\Cad\1\2\Mech\1\2\DM1.0.dwg Wed 21-Dec-2016 - 05:43PM

LIGHT FIXTURE SCHEDULE						
TYPE	OPT.	MANUFACTURER & CATALOG No.	VOLTAGE	LAMPS	DESCRIPTION & REMARKS	
A	1	METALUX 24AC LD4 39 RDP UNV L835 CD1 U	120	3900 LUMEN 35W LED 3500 K	CEILING RECESSED	2' x 4' LED RECESSED TROFFER WITH 0-10V DIMMING DRIVER WITH TWO BAR ACRYLIC LENS.
	2	LITHONIA LIGHTING 2RTL4 40L E21 LP835				
	3	COLUMBIA LEPC 24 35 LW G LL ED1 U				
	4	APPROVED EQUAL				
AE	1	METALUX 24AC LD4 39 RDP UNV EL14W L835 CD1 U	120	3900 LUMEN 35W LED 3500 K	CEILING RECESSED	2' x 4' LED RECESSED TROFFER WITH 0-10V DIMMING DRIVER WITH TWO BAR ACRYLIC LENS. PROVIDE WITH INTEGRAL BATTERY PACK.
	2	LITHONIA LIGHTING 2RTL4 40L E21 LP835 EL14L				
	3	COLUMBIA LEPC 24 35 LW G LL ED1 U ELL14				
	4	APPROVED EQUAL				
BE	1	McGRAW-EDISON ISS E02 LED E1 BL3 BK BBB-120 P TR	120	5,400 LUMEN 47W LED 4000 K	WALL MOUNT	EXTERIOR WALL-MOUNTED LED FIXTURE. PROVIDE WITH INTEGRAL BATTERY PACK AND INTEGRAL PHOTOCELL.
	2	LITHONIA WSQ LED 2 10A700/40K SR3 120 BBW PE ELCW VG DBLXD				
	3	SPALDING AUATERSPHERE 30L 4K 053 3 U BL BBU				
	4	APPROVED EQUAL				

OCCUPANCY SENSOR SCHEDULE		
SENSOR DESIGNATION	TYPE	DESCRIPTION
-A-	DUAL TECHNOLOGY	CEILING MOUNTED, DUAL TECHNOLOGY, 360 DEGREE COVERAGE.

LIGHTING CONTROL SCHEDULE					
PLAN MARK	SPACE TYPE	ROOMS	EQUIPMENT REQUIRED	BUTTON FUNCTION	SEQUENCE OF OPERATION
OF	OFFICE	2103, 2203	1 - BUTTON WALL STATION TYPE -A- OCCUPANCY SENSORS PHOTO CELL DIMMING POWER PACK	1 - ALL LIGHTS ON, ALL LIGHTS OFF	LIGHTS ARE TO BE VACANCY CONTROLLED. WALL STATION PROVIDES MANUAL ON AND OVERRIDE OFF FOR ALL FIXTURES. AFTER SPACE IS UNOCCUPIED FOR 10 MINUTES, ALL LIGHTS TURN OFF AUTOMATICALLY. PHOTOCELL SHALL AUTOMATICALLY DIM DAYLIGHT ZONES AS REQUIRED TO MAINTAIN 45 FC LIGHT LEVEL.
OS	SMALL ROOM	2103, 2202, 2204, 2301, 2302, 2303	DUAL-TECHNOLOGY WALL SENSOR DIMMING POWER PACK	1 - ALL LIGHTS ON, ALL LIGHTS OFF	LIGHTS ARE TO BE VACANCY CONTROLLED. WALL STATION PROVIDES MANUAL ON AND OVERRIDE OFF OF ALL LIGHTS. AFTER SPACE IS UNOCCUPIED FOR 10 MINUTES, ALL LIGHTS TURN OFF AUTOMATICALLY.
CF	CONFERENCE ROOM	2107	4 - BUTTON WALL STATION TYPE -A- OCCUPANCY SENSORS PHOTO CELL DIMMING POWER PACK	1 - ALL LIGHTS ON 2 - ALL LIGHTS OFF 3 - ALL LIGHTS RAISE 4 - ALL LIGHTS LOWER	OCCUPANCY SENSOR PROVIDES AUTO ON TO 50% OUTPUT. AFTER SPACE IS UNOCCUPIED FOR 10 MINUTES, ALL LIGHTS TURN OFF AUTOMATICALLY. WALL STATION PROVIDES MANUAL DIMMING AND OVERRIDE OFF FOR ALL FIXTURES. PHOTOCELL SHALL AUTOMATICALLY DIM DAYLIGHT ZONES AS REQUIRED TO MAINTAIN 45 FC LIGHT LEVEL.
OP	OPEN OFFICE	2102, 2106, 2201, 2300	4 - BUTTON WALL STATION TYPE -A- OCCUPANCY SENSORS PHOTO CELL DIMMING POWER PACK	1 - ALL LIGHTS ON 2 - ALL LIGHTS OFF 3 - ALL LIGHTS RAISE 4 - ALL LIGHTS LOWER	OCCUPANCY SENSOR PROVIDES AUTO ON TO 50% OUTPUT. AFTER SPACE IS UNOCCUPIED FOR 30 MINUTES, ALL LIGHTS TURN OFF AUTOMATICALLY. WALL STATION PROVIDES MANUAL DIMMING AND OVERRIDE OFF FOR ALL FIXTURES. PHOTOCELL SHALL AUTOMATICALLY DIM DAYLIGHT ZONES AS REQUIRED TO MAINTAIN 45 FC LIGHT LEVEL.



A3 LIGHTING NEW WORK PLAN
SCALE: 1/8" = 1'-0"



KEYED NOTES

- NEW LIGHT FIXTURE TO BE FED FROM EXISTING CIRCUIT IN ROOM. EXTEND EXISTING WIRING AS NEEDED.
- PROVIDE NEW WALL STATION IN EXISTING SWITCH BOX.
- NEW LOCATION FOR EXISTING SPEAKER.
- NEW LIGHT FIXTURE TO BE MOUNT IN EXISTING BOX. CONNECT FIXTURE TO EXISTING CIRCUIT.
- REINSTALL EXISTING EXIT SIGN.
- PROVIDE NEW WALL STATION IN NEW WALL. CONNECT WALL STATION TO EXISTING CIRCUIT IN ROOM. EXTEND WIRING AS NEEDED.
- LOCATION OF EXISTING PROJECTOR. BY OTHERS, COORDINATE LIGHT FIXTURE LOCATION.

GENERAL NOTES

- WHEN AN EXISTING CIRCUIT IS INDICATED TO BE REUSED, THE CONTRACTOR SHALL VERIFY EXISTING CIRCUIT CAPACITY AND CONNECT A TOTAL OF NOT MORE THAN 16 AMPS ON A 20 AMP BREAKER.
- SEE LIGHT FIXTURE SCHEDULE, THIS SHEET, FOR MORE INFORMATION.
- SEE LIGHTING CONTROL SCHEDULE, THIS SHEET FOR MORE INFORMATION.
- SEE OCCUPANCY SENSOR SCHEDULE, THIS SHEET, FOR MORE INFORMATION.
- CONTRACTOR SHALL FOLLOW THE PHASING SCHEDULE SET BY THE SCHOOL AND THE ARCHITECT. SEE ARCHITECTURAL SHEET A.1 FOR PHASING PLAN.
- SEE DETAIL H3/E2 FOR TYPICAL LIGHTING WIRING DIAGRAM - SWITCHING CONTROLLER.
- SEE DETAIL E1/E2 FOR TYPICAL LIGHTING WIRING DIAGRAM - DIMMING CONTROLLER.
- SEE DETAIL H1/E2 FOR TYPICAL WIRING DEVICE DETAIL.

CONSULTANT:
BRIC
PARTNERSHIP, LLC
CONSULTING ENGINEERS
100 EAST WASHINGTON, SUITE 220
BELLEVILLE, IL 62220
TEL 618.277.5200
FAX 618.277.5227

AAIC inc.
One Design Mesa
Collinsville, Illinois
62234
P 618.345.1270
F 618.345.1282
www.aaicinc.com



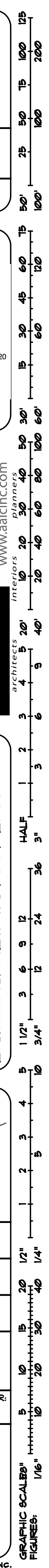
SCHOOL OF DENTAL MEDICINE
213 - ADMINISTRATION BUILDING
2ND FLOOR RENOVATIONS
DRAWING:
LIGHTING NEW WORK PLAN

SIGNED: 12-22-16
ERIC R. ROGERS
082-06065
REGISTERED PROFESSIONAL ENGINEER OF ILLINOIS
EXPIRES: 11-30-2017

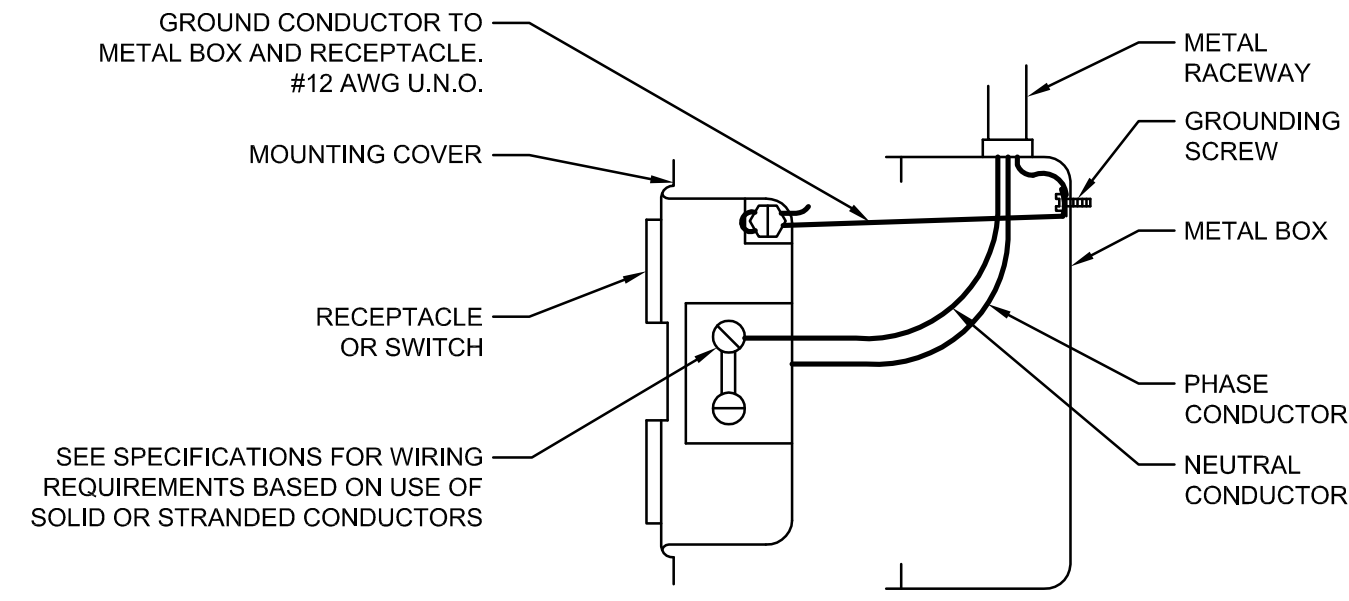
DATE:
12-22-2016
DRAWN:
RTM
APP:
ERR
CHECK:
ERR
APP:
ERR

PROJECT PHASE:
BID
DOCUMENTS
AAIC PROJECT NUMBER:
16011
SHEET NUMBER:

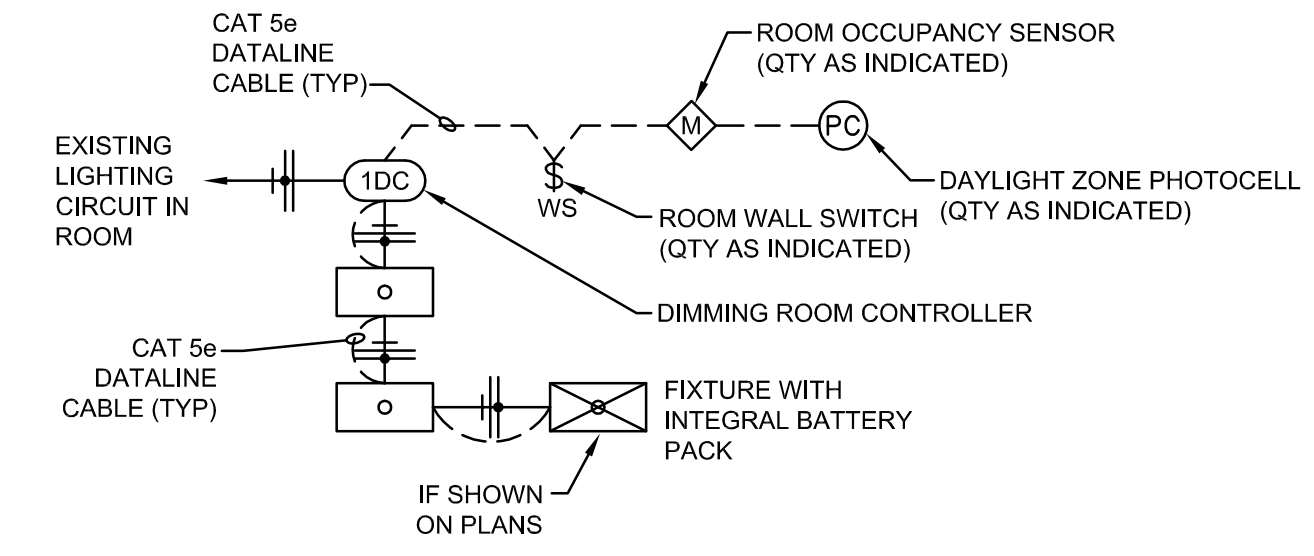
E1.0
OF 10 SHEETS
COPYRIGHT 2009 BY AAIC, INC.



M:\2008\1-10\1\2\Cad\1\2\Elec\1\2\E1.dwg Wed 12-Dec-2016 - 05:41PM

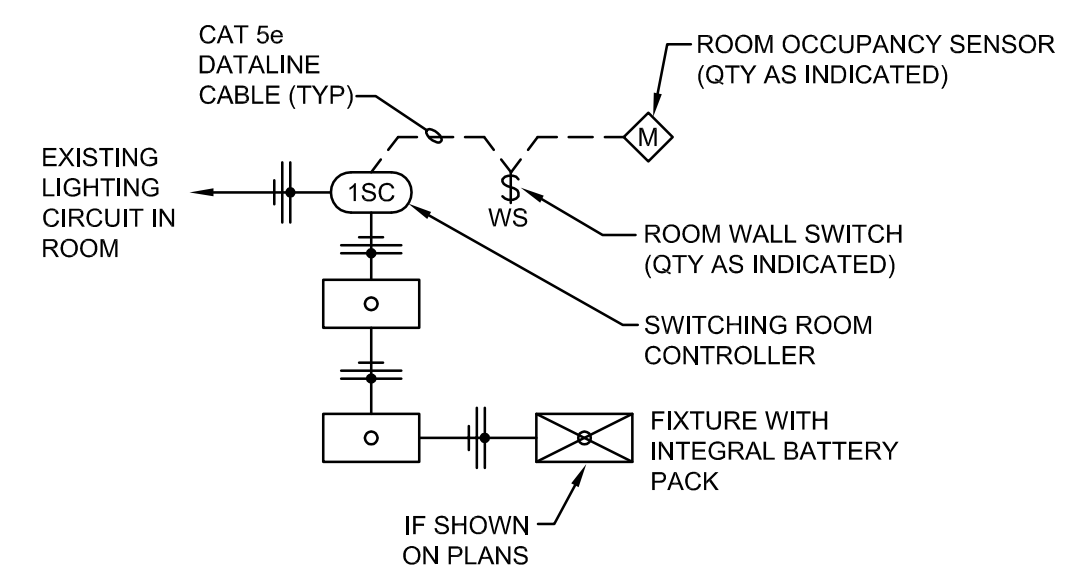


H1
E2.0 TYPICAL WIRING DEVICE DETAIL
SCALE: NO SCALE



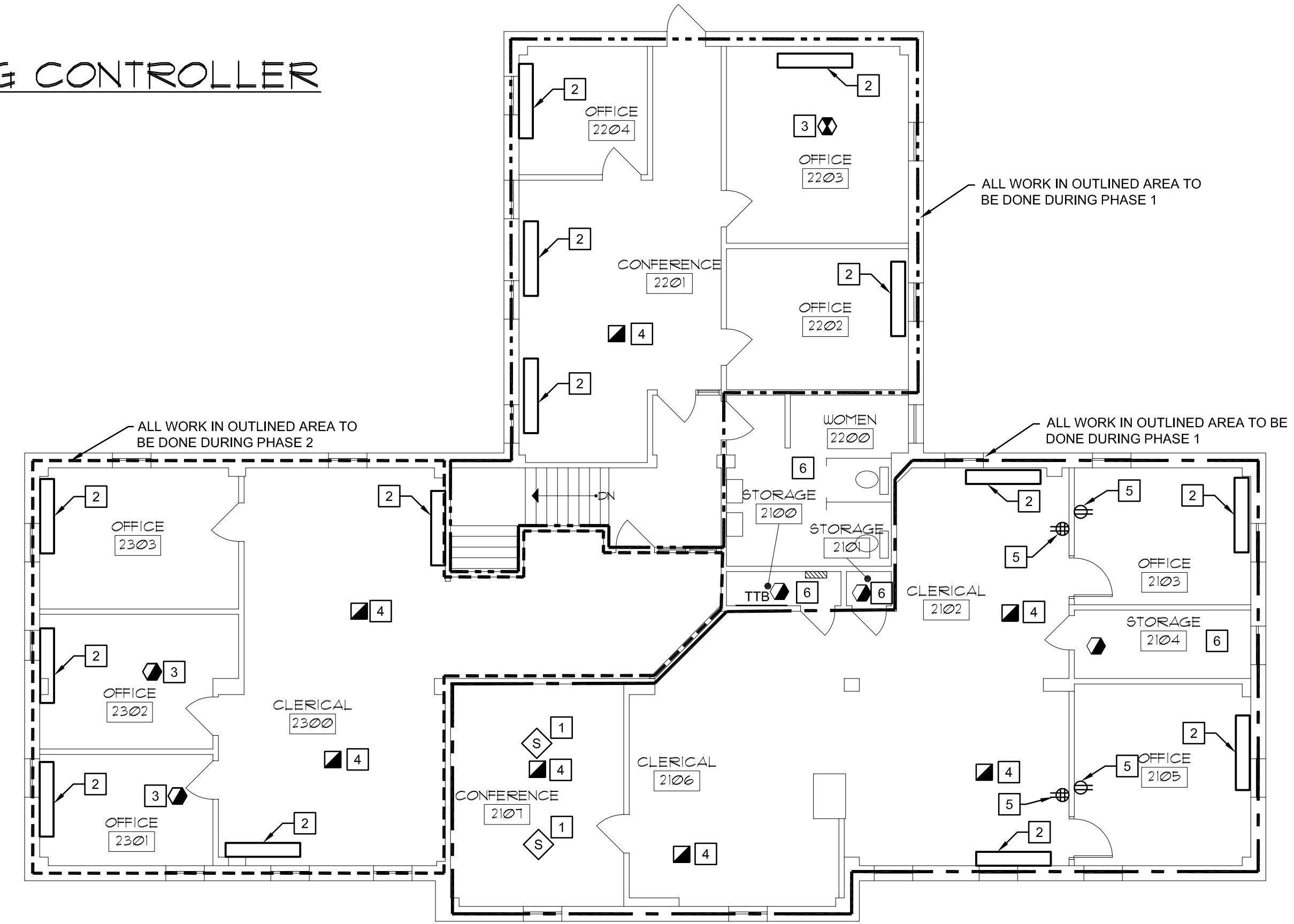
GENERAL NOTE: BASIS OF DESIGN IS WATTSTOPPER DIGITAL LIGHTING MANAGEMENT. SEE FLOOR PLANS, SPECIFICATIONS, AND LIGHTING CONTROLS SCHEDULE FOR ADDITIONAL INFORMATION.

H3
E2.0 TYPICAL LIGHTING WIRING DIAGRAM - DIMMING CONTROLLER
SCALE: NO SCALE



GENERAL NOTE: BASIS OF DESIGN IS WATTSTOPPER DIGITAL LIGHTING MANAGEMENT. SEE FLOOR PLANS, SPECIFICATIONS, AND LIGHTING CONTROLS SCHEDULE FOR ADDITIONAL INFORMATION.

E1
E2.0 TYPICAL LIGHTING WIRING DIAGRAM - SWITCHING CONTROLLER
SCALE:



A3
E2.0 POWER AND SYSTEMS NEW WORK PLAN
SCALE: 1/8" = 1'-0"

KEYED NOTES

- NEW LOCATION FOR EXISTING SPEAKER.
- REINSTALL EXISTING ELECTRIC BASE BOARD HEATER TO EXISTING CIRCUIT. EXTEND WIRING AS NEEDED.
- REINSTALL EXISTING FIRE ALARM DEVICE. EXTEND WIRING AS NEEDED.
- EXISTING FLOOR BOX TO BE MADE FLUSH WITH NEW FLOOR. COORDINATE NEW HEIGHT WITH FLOORING INSTALLER BEFORE NEW CONCRETE IS POURED. EXTEND WIRING AS NEEDED.
- CONNECT NEW ELECTRICAL DEVICE TO EXISTING CIRCUIT. EXTEND WIRING AS NEEDED.
- NO NEW POWER AND SYSTEMS WORK IN THIS ROOM.

CONSULTANT:

BRIC
PARTNERSHIP, LLC
CONSULTING ENGINEERS

100 EAST WASHINGTON, SUITE 220
BELLEVILLE, IL 62220
TEL 618.277.5200
FAX 618.277.5227

AAIC inc.
One Design Mesa
Collinsville, Illinois
62234
P 618.345.1270
F 618.345.1282
www.aaicinc.com



SCHOOL OF DENTAL MEDICINE
213 - ADMINISTRATION BUILDING
2ND FLOOR RENOVATIONS

DRAWING: POWER AND SYSTEMS NEW WORK
PLAN

- GENERAL NOTES**
- WHEN AN EXISTING CIRCUIT IS INDICATED TO BE REUSED, THE CONTRACTOR SHALL VERIFY EXISTING CIRCUIT CAPACITY AND CONNECT A TOTAL OF NOT MORE THAN 16 AMPS ON A 20 AMP BREAKER.
 - CONTRACTOR SHALL FOLLOW THE PHASING SCHEDULE SET BY THE SCHOOL AND THE ARCHITECT. SEE ARCHITECTURAL SHEET A.1 FOR PHASING PLAN.
 - SEE DETAIL H1/E2 FOR TYPICAL WIRING DEVICE DETAIL.

SIGNED: 12-22-16

ERIC R. ROGERS
082-06065
REGISTERED PROFESSIONAL ENGINEER OF ILLINOIS

EXPIRES: 11-30-2017

DATE: 12-22-2016

DRAWN: RTM	APP: ERR
CHECK: ERR	APP: ERR

PROJECT PHASE:
BID DOCUMENTS

AAIC PROJECT NUMBER:
16011

SHEET NUMBER:

E2.0

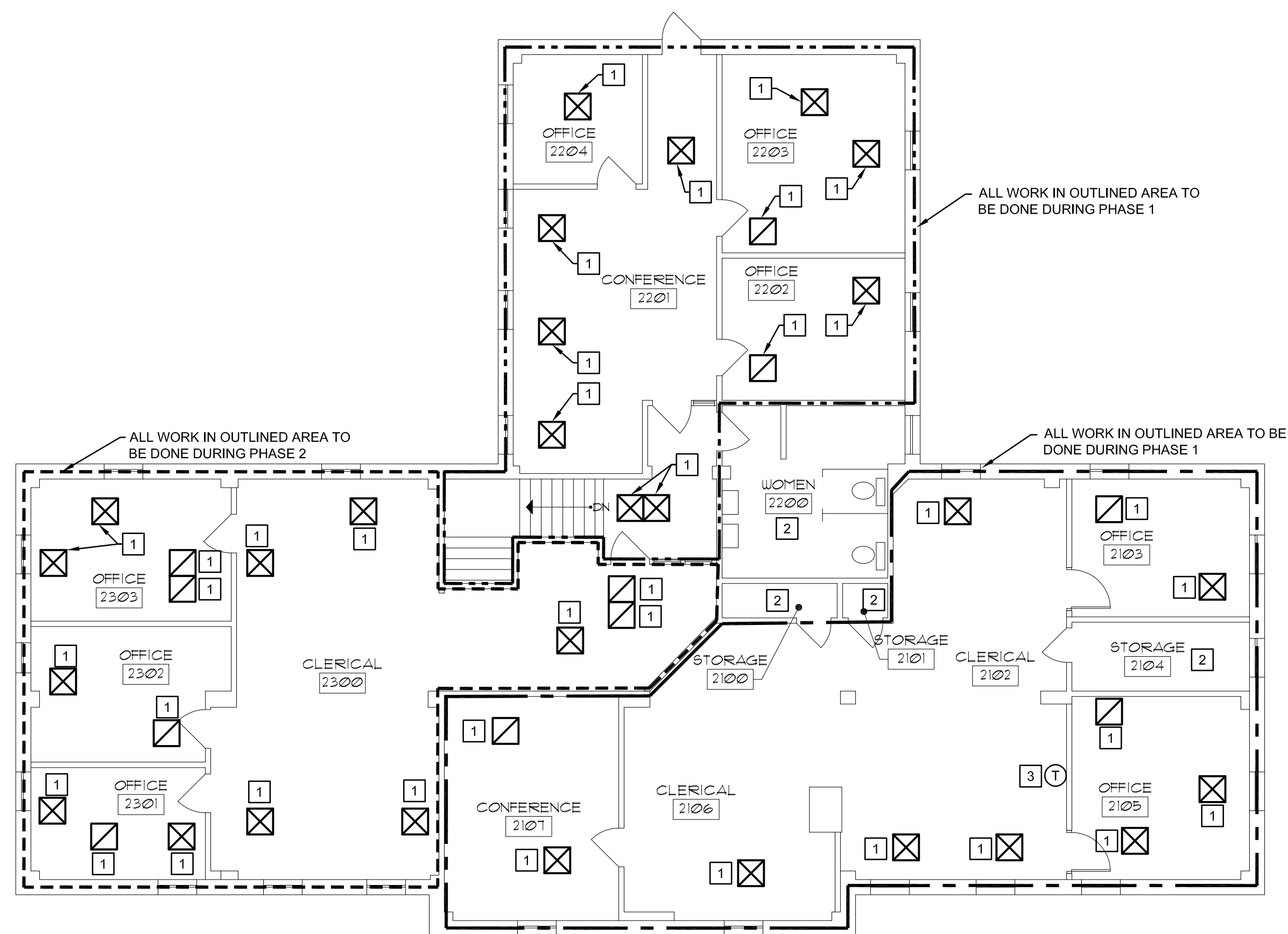
OF 10 SHEETS

GRAPHIC SCALE: 1/16" = 1'-0"

FIGURES: 1 2 3 4 5 6 7 8 9 10 11 12 13 14 15 16 17 18 19 20 21 22 23 24 25 26 27 28 29 30 31 32 33 34 35 36 37 38 39 40 41 42 43 44 45 46 47 48 49 50 51 52 53 54 55 56 57 58 59 60 61 62 63 64 65 66 67 68 69 70 71 72 73 74 75 76 77 78 79 80 81 82 83 84 85 86 87 88 89 90 91 92 93 94 95 96 97 98 99 100

M:\2008T-10\1\2\Cad\1\2\Elec\1\2\E2.dwg Wed 21-Dec-2016 - 05:42PM

A B C D E F G H J K



M10 MECHANICAL NEW WORK PLAN
 SCALE: 1/8" = 1'-0"
 NORTH

- KEYED NOTES**
- 1 REINSTALL EXISTING AIR DIFFUSER IN NEW CEILING GRID. EXTEND / TRIM FLEX DUCT AS NEEDED.
 - 2 NO NEW MECHANICAL WORK IN ROOM.
 - 3 REINSTALL EXISTING THERMOSTAT ON NEW WALL. EXTEND CONTROLS AS NEEDED.

CONSULTANT:
BRIC
 PARTNERSHIP, LLC
 CONSULTING ENGINEERS
 100 EAST WASHINGTON, SUITE 220
 BELLEVILLE, IL 62220
 TEL 618.277.5200
 FAX 618.277.5227

AAIC inc.
 One Design Mesa
 Collinsville, Illinois
 62234
 P 618.345.1270
 F 618.345.1282
 www.aaicinc.com



SCHOOL OF DENTAL MEDICINE
 213 - ADMINISTRATION BUILDING
 2ND FLOOR RENOVATIONS
 MECHANICAL NEW WORK PLAN

SIGNED: 12-22-16
 ERIC R. ROGRUE
 082-06064
 REGISTERED PROFESSIONAL ENGINEER OF ILLINOIS
 EXPIRES: 11-30-2017

DATE: 12-22-2016
 DRAWN: RTM APP: ERR
 CHECK: ERR APP: ERR

PROJECT PHASE: BID DOCUMENTS
 AAIC PROJECT NUMBER: 16011
 SHEET NUMBER:

M10
 OF 10 SHEETS
 COPYRIGHT 2009 by AAIC, INC.

