

CAMPUS ROAD MAINTENANCE AND DELYTE MORRIS TRAIL RECONSTRUCTION

SOUTHERN ILLINOIS UNIVERSITY EDWARDSVILLE SUPPORTING SERVICES 1002 EDWARDSVILLE, ILLINOIS 62026

INDEX OF DRAWINGS

- G1.1.....COVER SHEET
- C0.1.....GENERAL NOTES | SYMBOLS | LEGENDS
- C1.1.....BUMP GRINDING PLAN
- C1.2.....CRACK SEALING PLAN
- C1.3.....PAVEMENT MARKING PLAN
- C1.4.....PARTIAL DEPTH PAVEMENT PATCHING PLAN
- C2.1.....DELYTE MORRIS TRAIL TYPICAL SECTIONS
- C3.1.....DELYTE MORRIS TRAIL PLAN
- C4.1.....CONSTRUCTION DETAILS
- C4.2.....CONSTRUCTION DETAILS
- C5.1.....TRAFFIC CONTROL DETAILS

SUMMARY OF QUANTITIES & SPECIFICATIONS

IDOT SECTION NO.	ITEM	UNIT	TOTAL QUANTITIES
S 211	TOPSOIL FURNISH AND PLACE, VARIABLE DEPTH	SQ YD	525
S 250	SEEDING	ACRE	0.4
251	EROSION CONTROL BLANKET	SQ YD	1,035
280	INLET AND PIPE PROTECTION	EACH	4
S 281	STONE RIPRAP	SQ YD	9
S 281	REMOVE AND REPLACE STONE RIPRAP	SQ YD	18
282	FILTER FABRIC	SQ YD	27
351	AGGREGATE BASE COURSE, TYPE B	SQ YD	36
403	BITUMINOUS MATERIALS (PRIME COAT)	GALLON	1,028
406	BUTT JOINT	EACH	7
406	HOT-MIX ASPHALT SURFACE COURSE	TON	460
440	PAVEMENT REMOVAL	SQ YD	36
S 440	RECLAIMED BASE CONSTRUCTION	SQ YD	2,599
S 440	BUMP GRINDING - UNIT COST	FT	950
S 442	PARTIAL DEPTH PAVEMENT PATCHING - UNIT COST	SQ YD	100
S 442	LATEX MODIFIED MORTAR PAVEMENT PATCHING	SQ FT	83
451	CRACK SEALING - UNIT COST	DAYS	10
S 550	STORM SEWERS, CLASS A, TYPE 1 12"	FOOT	32
S 550	ADJUST EXISTING STORM SEWER	FOOT	16
602	MANHOLES TO BE ADJUSTED	EACH	7
604	GRATES, TYPE 8	EACH	2
S 606	CONCRETE GUTTER (SPECIAL)	FT	60
780	PAINT PAVEMENT MARKING - LETTERS AND SYMBOLS	SQ FT	200
780	PAINT PAVEMENT MARKING - LINE 4"	FOOT	85,200
780	PAINT PAVEMENT MARKING - LINE 12"	FOOT	100
780	PAINT PAVEMENT MARKING - LINE 24"	FOOT	450
S	TRAFFIC CONTROL AND PROTECTION	L SUM	1
S	STORM SEWERS TO BE CLEANED	FOOT	40

S - SEE PROJECT MANUAL SPECIFICATION

QUANTITIES HAVE BEEN ESTIMATED FOR REFERENCE PURPOSES ONLY AND NO WARRANTY IS MADE AS TO THE ACCURACY OF THESE ESTIMATES. THE CONTRACTOR SHALL COMPLETE ALL WORK NECESSARY TO CONSTRUCT THE PROJECT AS SHOWN ON THE PLAN SHEETS AND DETAILS REGARDLESS OF THE QUANTITIES ESTIMATED.

PAYMENT FOR WORK WILL BE ON A LUMP SUM BASIS, PER CONTRACT. THE CONTRACTOR SHALL PROVIDE A COMPLETE WORKING PROJECT REGARDLESS OF THE QUANTITIES REPRESENTED ABOVE.

THE CONTRACTOR SHALL CONSTRUCT THE ITEMS ACCORDING TO THE GENERAL NOTES AND THE CORRESPONDING SECTION IN THE ILLINOIS DEPARTMENT OF TRANSPORTATION "STANDARD SPECIFICATIONS FOR ROAD AND BRIDGE CONSTRUCTION".

BID DOCUMENTS

ENGINEER



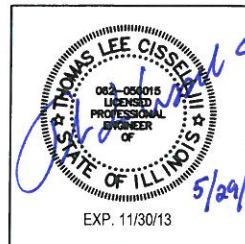
OATES ASSOCIATES
Engineering + Architecture

ILLINOIS
Eastport Business Center 1
100 Lanter Court, Suite 1
Collinsville, IL 62234
tel 618.345.2200
fax 618.345.7233

MISSOURI
Laclede Gas Building
720 Olive, Suite 1660
St. Louis, MO 63101
tel 314.588.8381
fax 314.588.9605

www.oatesassociates.com

PROFESSIONAL CORPORATION REGISTRATION NO.
184.001115 EXPIRES: 04/30/2013



PROJECT MANAGEMENT & ENGINEER:

OATES ASSOCIATES, INC.

EASTPORT BUSINESS CENTER 1
100 LANTER COURT, SUITE 1
COLLINSVILLE, ILLINOIS 62234
REGISTRATION NO.: 184.001115
EXPIRES: 04 / 30 / 2013

CONTACT: TOM CISSELL
PROJECT MANAGER
618.345.2200
618.345.7233 FAX
Tom.Cissell@oatesassociates.com

OWNER



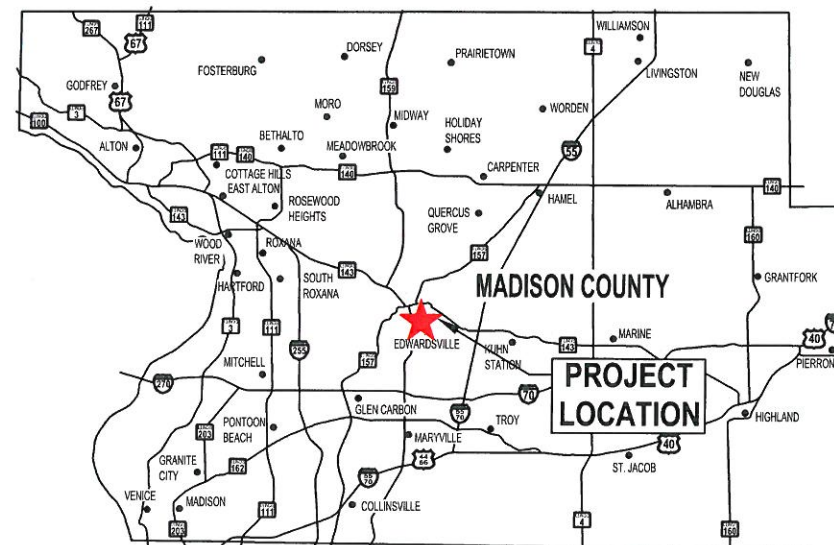
CLIENT:

SOUTHERN ILLINOIS UNIVERSITY EDWARDSVILLE

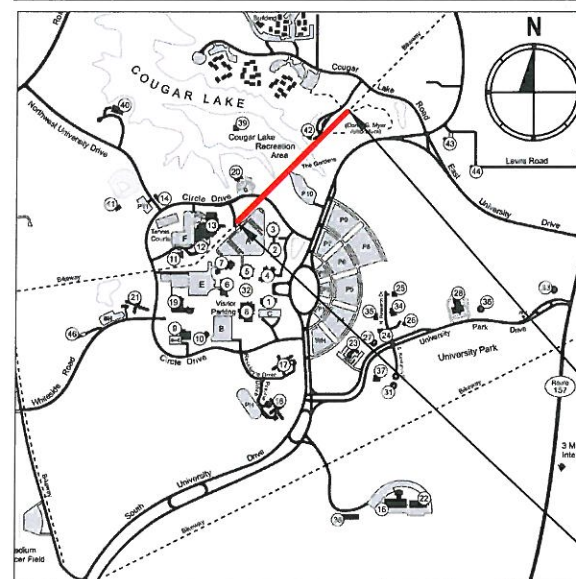
SUPPORTING SERVICES 1002
EDWARDSVILLE, ILLINOIS 62026

CONTACT: PAUL FULIGNI
DIRECTOR OF FACILITIES MANAGEMENT
618.650.2560
pfulign@sium.edu

VICINITY MAP



LOCATION MAP - DELYTE MORRIS TRAIL RECONSTRUCTION



**END DELYTE MORRIS
TRAIL IMPROVEMENTS
STA. 34+26**

**BEGIN DELYTE MORRIS
TRAIL IMPROVEMENTS
STA. 10+00**

ABBREVIATIONS

AD ALGEBRAIC DIFFERENCE IN GRADE	DIA DIAMETER	IN INCHES	SEW SEWER
ADJ ADJACENT	DND DO NOT DISTURB	INV INVERT	SF SQUARE FEET
AGG AGGREGATE	DS DOWN SPOUT	JB JUNCTION BOX	SHT SHEET
AI AREA INLET	DTL DETAIL	K LENGTH OF VERTICAL CURVE PER PERCENT GRADE DIFFERENCE	STA STATION
ALT ALTERNATE	E EAST	LF LINEAR FEET	STD STANDARD
BC BACK OF CURB	EA EACH	MAT MATERIAL	STM STORM
BIT BITUMINOUS	EJ EXPANSION JOINT	MAX MAXIMUM	SY SQUARE YARD
BLDG BUILDING	EL ELEVATION	MECH MECHANICAL	TBA TO BE ADJUSTED
BLRD BOLLARD	ELEC ELECTRIC	MH MANHOLE	TBR TO BE REMOVED
BM BENCHMARK	ENGR ENGINEER	MIN MINIMUM	TBRL TO BE RELOCATED
BO BY OTHERS (USED IN CONJUNCTION WITH TBA & TBR)	EOP EDGE OF PAVEMENT	MISC MISCELLANEOUS	TBV TO BE VACATED
BVCE BEGINNING OF VERTICAL CURVE ELEVATION	EQ EQUAL	N NORTH	TCE TEMPORARY CONSTRUCTION EASEMENT
BVCS BEGINNING OF VERTICAL CURVE STATION	ESMT EASEMENT	NF NOW OR FORMERLY	TEL TELEPHONE
BW BOTTOM OF WALL	ETR EXISTING TO REMAIN	NIC NOT IN CONTRACT	THK THICK
CATV CABLE TELEVISION	EVCE END OF VERTICAL CURVE ELEVATION	NO NUMBER	TUP TEMPORARY USE PERMIT
CB CATCH BASIN	EVCS END OF VERTICAL CURVE STATION	NTS NOT TO SCALE	TW TOP OF WALL
CI CURB INLET	EX EXISTING	O/C OIL AND CHIP	TYP TYPICAL
CJ CONTROL JOINT	EXP EXPANSION	OC ON CENTER	UIP USE IN PLACE
CL CENTERLINE	FES FLARED END SECTION	OD OUTSIDE DIAMETER	UTIL UTILITIES
CLF CHAIN LINK FENCE	FF FINISHED FLOOR	PERM PERMANENT	VCP VITRIFIED CLAY PIPE
CMP CORRUGATED METAL PIPE	FL FLOW LINE	PL PROPERTY LINE	W WIDTH OR WEST
CMU CONCRETE MASONRY BLOCK	FO FIBER OPTIC	PVC POLYVINYL CHLORIDE PIPE	W/ WITH
CO CLEANOUT	FT FEET	PVI POINT OF VERTICAL INTERSECTION	WO/ WITHOUT
COM COMMUNICATIONS	FV FIELD VERIFY	PVMT PAVEMENT	WR WATER RESISTANT
CONC CONCRETE	GI GRATE INLET	QTY QUANTITY	WT WEIGHT
CONST CONSTRUCTION	GND GROUND	R RADIUS	WTR WATER
CP CONTROL POINT	HDPE HIGH DENSITY POLYETHYLENE	RCP REINFORCED CONCRETE PIPE	WWF WELDED WIRE FABRIC
CTR CENTER	HMA HOT-MIX-ASPHALT	RD ROOF DRAIN	YD YARD DRAIN
CY CUBIC YARD	HT HEIGHT	ROW RIGHT OF WAY	YL YARD LIGHT
	HVAC HEATING/ VENTILATION/AIR CONDITIONING	S SOUTH	
	ID INSIDE DIAMETER	SAN SANITARY	

LEGEND

EX	NEW	EX	NEW

SYMBOLS LEGEND

	ELEVATION REFERENCE		DRAWING REVISION
	ELEVATION REFERENCE		DEMOLITION KEYNOTE
	ELEVATION REFERENCE		PLAN KEYNOTE
	DETAIL REFERENCE		PR SPOT ELEVATION
	SECTION REFERENCE		EX SPOT ELEVATION

LINETYPES

EX	NEW	EX	NEW

MATERIAL SYMBOLS

	HOT-MIX ASPHALT		LANDSCAPING
	COMPACT EARTH		RIP RAP
	CONCRETE		ASPHALT RECLAIMED BASE
	CONCRETE BLOCK		

GENERAL NOTES

- THE CONTRACTOR SHALL VERIFY ALL DIMENSIONS AND CONDITIONS IN THE FIELD PRIOR TO ORDERING MATERIALS AND COMMENCING CONSTRUCTION.
- THE CONTRACTOR SHALL POTHOLE ALL UTILITIES THAT ARE WITHIN CONSTRUCTION AREAS TO AVOID ANY CONFLICT WITH UTILITIES AT NO ADDITIONAL COST TO THE LUMP SUM CONTRACT.
- THE CONTRACTOR SHALL REMOVE, MAINTAIN IN A TEMPORARY LOCATION AND PERMANENTLY RESET ALL TRAFFIC, PRIVATE AND INSTITUTIONAL SIGNS WHICH INTERFERE WITH CONSTRUCTION OPERATIONS ACCORDING TO ARTICLE 107.20 AND 107.25 OF THE "STANDARD SPECIFICATIONS FOR ROAD AND BRIDGE CONSTRUCTION" AND AS DIRECTED BY THE ENGINEER. COST TO COMPLY WITH THIS SPECIAL PROVISION WILL NOT BE PAID FOR SEPARATELY, BUT SHALL BE CONSIDERED AS INCLUDED IN THE LUMP SUM COST BID FOR THE CONTRACT.
- CONSTRUCTION MATERIAL AND/OR EQUIPMENT SHALL BE STORED BEHIND TRAFFIC CONTROL OR AT LOCATIONS DESIGNATED BY SIUE.
- TYPE III BARRICADES SHALL BE PLACED AT THE PROJECT LIMITS OF DELYTE MORRIS TRAIL CONSTRUCTION AND AT ALL CONNECTING TRAIL LIMITS.
- THE CONTRACTOR SHALL CONFINE ALL OPERATIONS TO THE CONSTRUCTION LIMITS LINE SHOWN ON THE PLANS. ANY AREA DISTURBED BEYOND THESE LIMITS SHALL BE RESTORED TO ITS ORIGINAL CONDITION AT THE CONTRACTOR'S EXPENSE.
- THE CONTRACTOR SHALL FERTILIZE, SEED AND MULCH ALL EARTH SURFACES DISTURBED BY CONSTRUCTION, EXCEPT AS NOTED IN THE PLANS.
- THE CONTRACTOR SHALL MATCH PROPOSED IMPROVEMENTS INTO EXISTING CONDITIONS WITH MINOR GRADING AND PROPOSED TOPSOIL.
- ANY UNSUITABLE MATERIAL ENCOUNTERED DURING CONSTRUCTION SHALL BE REMOVED BY THE CONTRACTOR AND REPLACED WITH SUITABLE MATERIAL AS APPROVED BY THE ENGINEER. THE COST TO REMOVE AND REPLACE UNSUITABLE MATERIAL THAT WAS NOT VISIBLE DURING THE PREBID WALK-THROUGH WILL BE CONSIDERED AN UNFORESEEN CONDITION AND WILL BE PAID FOR AS AN AGREED PRICE OR ON A TIME AND MATERIAL BASIS.
- THE CONTRACTOR SHALL NOTE THE LOCATION OF ALL MANHOLE AND VALVE COVER FRAMES AND LIDS LOCATED WITHIN RECONSTRUCTION LIMITS. APPROPRIATE CARE SHALL BE TAKEN TO PROTECT THESE ITEMS DURING CONSTRUCTION OPERATIONS.
- ALL EXISTING ROADWAY FEATURES INCLUDING, BUT NOT LIMITED TO, PAVEMENT, CURB, CULVERTS, HEADWALLS, RIPRAP, FENCING, WHICH INTERFERE WITH THE PROPOSED CONSTRUCTION SHALL BE REMOVED BY THE CONTRACTOR UNLESS NOTED OTHERWISE ON THE PLANS. THIS WORK SHALL BE PERFORMED AT NO ADDITIONAL COST TO THE CONTRACT UNLESS THE ENGINEER DEEMS THE WORK AS UNFORESEEN.
- ALL DRAINAGE STRUCTURES CONSTRUCTED, ADJUSTED OR MODIFIED UNDER THE CONTRACT, SHALL BE CLEANED OF ANY ACCUMULATION OF SILT, DEBRIS OR FOREIGN MATTER AT THE END OF EACH WORKING DAY AND AT THE TIME OF FINAL INSPECTION. THE COST OF THIS WORK WILL NOT BE PAID FOR SEPARATELY, BUT SHALL BE CONSIDERED AS INCLUDED IN THE CONTRACT LUMP SUM PRICE.
- THE CONTRACTOR SHALL PROVIDE AND MAINTAIN SILTATION CONTROL, AS NEEDED, TO PREVENT SILTATION OF OFF SITE PROPERTIES, UNTIL THE VEGETATION IN ALL DISTURBED AREAS HAS BEEN ESTABLISHED, AT WHICH TIME HE/SHE SHALL BE RESPONSIBLE FOR THE REMOVAL OF ALL TEMPORARY SILTATION CONTROL AND REPAIR OF ANY ERODED AREAS. SILT FENCING AND OTHER EROSION CONTROL SHALL BE PROVIDED AND INSTALLED IN ACCORDANCE WITH APPLICABLE I.E.P.A. EROSION CONTROL STANDARDS AND THE ILLINOIS URBAN MANUAL.
- ALL PAINT PAVEMENT MARKING LOCATIONS SHALL MATCH THE EXISTING LOCATIONS OR MAY BE ADJUSTED BY THE ENGINEER TO MATCH FIELD CONDITIONS. IF EXISTING PAVEMENT MARKINGS ARE NOT VISIBLE OR PLACED ON NEW PAVEMENT, MARKINGS SHALL BE PLACED ACCORDING TO HIGHWAY STANDARD 780001 OR DETAILS SHOWN ON THE PLANS.
- FULL DEPTH SAW CUTTING ON ALL EDGES FOR REMOVAL ITEMS SHALL BE INCLUDED IN THE LUMP SUM BID ACCORDING TO SECTION 440 OF THE "STANDARD SPECIFICATIONS FOR ROAD AND BRIDGE CONSTRUCTION".
- THE CONTRACTOR SHALL PROVIDE A PORTABLE RESTROOM FACILITY IN THE STAGING AREA. BUILDING FACILITIES ARE NOT AVAILABLE TO THE CONTRACTOR'S EMPLOYEES FOR USE.

UTILITY CONTACTS

THE FOLLOWING UTILITY COMPANIES MAY HAVE FACILITIES LOCATED WITHIN THE LIMITS OF CONSTRUCTION THAT MAY REQUIRE ADJUSTMENT, RELOCATION OR REMOVAL. ALL ARE MEMBERS OF J.U.L.I.E., UNLESS NOTED OTHERWISE.

AT&T (TELEPHONE) 203 GOETHE STREET COLLINSVILLE, IL 62234 (618) 346-6400 FAX: (618) 650-3333	SIUE OFFICE OF INFORMATION TECHNOLOGY (TELEPHONE & COMMUNICATIONS) PO BOX 1068 EDWARDSVILLE, IL 62026 (618) 650-3373
SOUTHERN ILLINOIS UNIVERSITY EDWARDSVILLE (WATER, SEWER) CAMPUS BOX 1039 EDWARDSVILLE, IL 62062 FAX: (618) 650-2595	AMEREN IP (GAS & ELECTRIC) 2600 NORTH CENTER ST. MARYVILLE, IL 62062 (618) 346-1287
CHARTER COMMUNICATIONS (CABLE TV) 210 W. DIVISION ST. MARYVILLE, IL 62062 (618) 345-6234	CITY OF EDWARDSVILLE 200 EAST PARK STREET EDWARDSVILLE, IL 62025 (618) 692-7535

THE ABOVE INFORMATION REPRESENTS THE BEST INFORMATION AVAILABLE TO THE OWNER AND IS ONLY INCLUDED FOR THE CONVENIENCE OF THE BIDDER. IT IS UNDERSTOOD AND AGREED THAT THE CONTRACTOR HAS TAKEN THE FOREGOING INTO CONSIDERATION IN PREPARING HIS/HER BID, AND NO ADDITIONAL COMPENSATION WILL BE ALLOWED FOR ANY DELAYS OR INCONVENIENCE CAUSED BY SAME.

UNDERGROUND FACILITIES, STRUCTURES AND UTILITIES HAVE BEEN PLOTTED FROM AVAILABLE SURVEYS AND RECORDS. THEIR LOCATIONS MUST BE CONSIDERED TO BE APPROXIMATE ONLY. IT IS POSSIBLE THERE MAY BE OTHERS, THE EXISTENCE OF WHICH IS NOT PRESENTLY KNOWN OR SHOWN. IT IS THE CONTRACTOR'S RESPONSIBILITY TO DETERMINE THEIR EXISTENCE AND EXACT LOCATION AND TO AVOID DAMAGE THERETO. ILLINOIS LAW REQUIRES A MINIMUM 48-HOUR NOTICE TO ALL UTILITY COMPANIES BEFORE DIGGING. FIELD LOCATIONS OF UNDERGROUND FACILITIES MAY BE OBTAINED BY CALLING THE J.U.L.I.E. SYSTEM AT 800-892-0123 AND PROVIDING 48 HOURS ADVANCE NOTICE. NON-J.U.L.I.E. MEMBERS MAY BE CONTACTED DIRECT. AGENCIES KNOWN TO HAVE FACILITIES WITHIN THE PROJECT LIMITS ARE LISTED BELOW.

ANY FACILITIES OR APPURTENANCES WHICH ARE THE PROPERTY OF ANY PUBLIC UTILITY LOCATED WITHIN THE LIMITS OF CONSTRUCTION SHOULD BE RELOCATED OR ADJUSTED BY THEIR RESPECTIVE OWNERS. THE CONTRACTOR SHALL NOTIFY AND COOPERATE WITH THE OWNERS OF ANY SUCH FACILITY IN THEIR REMOVAL AND REARRANGEMENT OPERATIONS IN ORDER THAT THESE OPERATIONS AND THE CONSTRUCTION OF THIS PROJECT MAY PROGRESS IN A REASONABLE MANNER. ALL ROADSIDE OBJECTS (UTILITY POLES, FIRE HYDRANTS, SIGNS, ETC.) SHALL BE RELOCATED TO PROVIDE A MINIMUM OF 2 FEET CLEARANCE, MEASURED FROM THE FACE OF CURB TO THE NEAR EDGE OF THE OBJECT. THE COST OF ANY NECESSARY RELOCATIONS MAY BE INCURRED BY THE OWNER IF OTHER ARRANGEMENTS CANNOT BE MADE OR PRIOR AGREEMENTS ARE NOT IN PLACE.

JOINT UTILITY LOCATING INFORMATION FOR EXCAVATIONS
PHONE: 800-892-0123

PRE-FINAL

MISSOURI
Laclede Gas Building
220 Olive, Suite 1000
St. Louis, MO 63101
Tel: 314.588.8381
Fax: 314.588.9605

ILLINOIS
Eastport Business Center 1
100 Lantier, Suite 1
Champaign, IL 61824
Tel: 618.345.2200
Fax: 618.345.7233
www.ogatesassociates.com

OGATES ASSOCIATES
Engineering + Architecture

SOUTHERN ILLINOIS UNIVERSITY
EDWARDSVILLE
ROAD MAINTENANCE AND DELYTE
MORRIS TRAIL RECONSTRUCTION
GENERAL NOTES | ABBREVIATIONS | SYMBOLS

THOMAS LEE CISEM
065-056015
LICENSED PROFESSIONAL ENGINEER
OF ILLINOIS
5/29/13
EXP. 3/13/13

PROJECT NO:
11028.030
DATE:
5/29/13
SHEET NO.:

C.01



BUMP GRINDING - ESTIMATED LOCATIONS

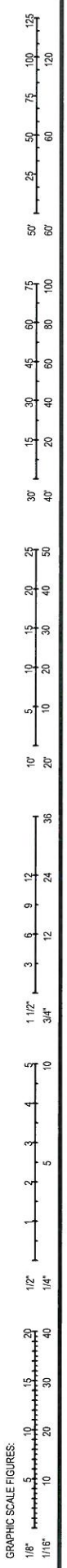
ROAD SECTION	ESTIMATED LENGTH
SOUTH UNIVERSITY DRIVE	350 FT
NORTH UNIVERSITY DRIVE	250 FT
EAST UNIVERSITY DRIVE	100 FT
NORTH CIRCLE DRIVE	150 FT
SOUTH CIRCLE DRIVE	100 FT

PLAN NOTES

1. ACTUAL BUMP GRINDING LOCATIONS WILL BE LAID OUT BY THE ENGINEER DURING CONSTRUCTION BUT THE GENERAL LOCATIONS ARE GIVEN FOR BIDDING PURPOSES.
2. TRAFFIC CONTROL ACCORDING TO HIGHWAY STANDARDS 701301 AND 701311 SHALL BE USED AT ALL TIMES DURING BUMP GRINDING OPERATIONS. SEE TRAFFIC CONTROL DETAILS.

PLAN LEGEND

ROAD SECTIONS REQUIRING BUMP GRINDING



REVISIONS:

NO.	DATE	REMARKS

MISSOURI
Laciere Gas Building
720 Olive, Suite 1660
St. Louis, MO 63101
tel: 314.588.8311
fax: 314.588.9605
www.odesassociates.com

ILLINOIS
Eastport Business Center 1
100 Lanier Court, Suite 1
Collinsville, IL 62234
tel: 618.345.2200
fax: 618.345.7233
www.odesassociates.com



SOUTHERN ILLINOIS UNIVERSITY EDWARDSVILLE
ROAD MAINTENANCE AND DELYTE MORRIS TRAIL RECONSTRUCTION BUMP GRINDING PLAN



EXP. 3/13/13
PROJECT NO.: 11028.030
DATE: 5/29/13
SHEET NO.:

BID DOCUMENTS

C1.1

HAUP11028IWO 30 - EDWARDSVILLE CAMPUS ROAD MAINTENANCEDWG11028.030 MAINTENANCE PROGRAM DESIGN.DWG
5/28/2013

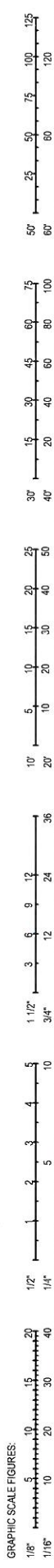


PLAN NOTES

1. ALL CRACKS THAT MEET OR EXCEED $\frac{1}{8}$ " IN WIDTH SHALL BE SEALED OR AS DIRECTED BY THE ENGINEER.
2. PRIOR TO SEALING, ALL CRACKS SHALL BE FREE OF DUST AND DEBRIS. THE CRACK SHALL BE BLOWN CLEAN WITH A POWER BRUSH/BLOWER OR WITH COMPRESSED AIR ACCORDING TO ARTICLE 452.04 OF THE "STANDARD SPECIFICATION FOR ROAD AND BRIDGE CONSTRUCTION.
3. TRAFFIC CONTROL ACCORDING TO HIGHWAY STANDARDS 701301 AND 701311 SHALL BE USED AT ALL TIMES DURING CRACK SEALING OPERATIONS. SEE TRAFFIC CONTROL DETAILS

PLAN LEGEND

ROAD SECTIONS REQUIRING CRACK SEALING



NO.	DATE	REMARKS

MISSOURI
Laclede Gas Building
720 Olive, Suite 1650
St. Louis, MO 63101
tel 314.588.8381
fax 314.588.9605

ILLINOIS
Eastport Business Center 1
100 Lanier Court, Suite 1
Collinsville, IL 62234
tel 618.345.2200
fax 618.345.7233
www.oatesassociates.com



**SOUTHERN ILLINOIS UNIVERSITY
EDWARDSVILLE**
ROAD MAINTENANCE AND DELYTE
MORRIS TRAIL RECONSTRUCTION
CRACK SEALING PLAN



EXP. 3/13/13
PROJECT NO.:
11028.030
DATE:
5/29/13
SHEET NO.:

BID DOCUMENTS

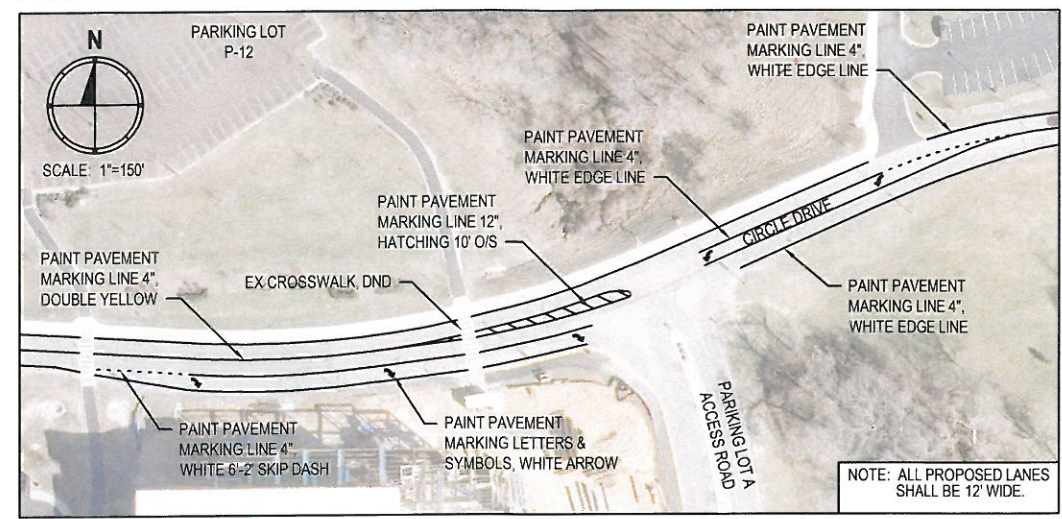
C1.2

H:\P11028\W0 30 - EDWARDSVILLE CAMPUS ROAD MAINTENANCE\DWG\11028.030 MAINTENANCE PROGRAM DESIGN.DWG
5/28/2013



PAVEMENT MARKING - SCOPE OF WORK	
ROAD SECTION	PAVEMENT MARKING TYPE
SUPPORTING SERVICES DR.	STOP BAR, WHITE EDGE, DOUBLE YELLOW, & YELLOW SKIP DASH
SOUTH CIRCLE DR.	STOP BAR, YELLOW LETTERS, WHITE EDGE, & DOUBLE YELLOW
NORTH CIRCLE DR.	STOP BAR, WHITE LETTERS & SYMBOLS, WHITE EDGE, DOUBLE YELLOW, & YELLOW HATCHING
PARKING LOT C ACCESS RD.	STOP BAR & YELLOW SKIP DASH
PECK SERVICE RD.	STOP BAR, DOUBLE YELLOW, WHITE PARKING STALLS, & RED HATCHING
NORTH UNIVERSITY DR. (CENTER OF CAMPUS)	STOP BAR, WHITE SKIP DASH, & DOUBLE YELLOW
WHITESIDE RD.	STOP BAR, DOUBLE YELLOW, & WHITE EDGE LINE
NORTHWEST UNIVERSITY DR.	STOP BAR, WHITE EDGE, & DOUBLE YELLOW
ARBORETUM LN.	STOP BAR & YELLOW SKIP DASH
COUGAR VILLAGE RD.	STOP BAR & YELLOW SKIP DASH
COUGAR LAKE DR.	WHITE EDGE & DOUBLE YELLOW
NORTH UNIVERSITY DR. (AT NEW POAG RD.)	WHITE EDGE, DOUBLE YELLOW, & WHITE SKIP DASH
DELYTE MORRIS TRAIL	YELLOW SKIP DASH

NORTH CIRCLE DRIVE AND PARKING LOT A ACCESS ROAD LAYOUT



PLAN NOTES

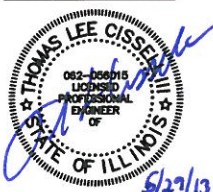
1. ALL STOP BARS, LETTERS & SYMBOLS, EDGE LINES, LANE LINES, AND CENTERLINES SHALL BE PAINTED TO MATCH THE EXISTING CONDITIONS. ALL CROSSWALKS AND SIUE LOGO MARKINGS SHOULD NOT BE DISTURBED OR PAINTED.
2. PRIOR TO PAINT OPERATIONS, ALL PAVEMENT SHALL BE CLEANED BY THE USE OF A WATERBLASTER TO MEET THE REQUIREMENTS DESCRIBED IN THE PROJECT SPECIFICATIONS. AFTER WATERBLASTING, THE PAVEMENT SHALL BE COMPLETELY DRY BEFORE PAVEMENT MARKINGS ARE APPLIED.
3. PAINT PAVEMENT MARKINGS AT THE INTERSECTION OF NORTH CIRCLE DRIVE AND PARKING LOT C ACCESS ROAD SHALL BE COMPLETELY REMOVED BY THE USE OF A WATERBLASTER. MARKINGS SHALL BE REPLACED AS SHOWN IN THE INTERSECTION LAYOUT. THE CONTRACTOR SHALL NOTIFY THE ENGINEER AT LEAST 48 HOURS PRIOR TO PAVEMENT OPERATIONS AT THE INTERSECTION TO ASSIST IN LAYING OUT PROPOSED PAVEMENT MARKINGS.
4. TRAFFIC CONTROL ACCORDING TO HIGHWAY STANDARDS 701301 AND 701311 SHALL BE USED AT ALL TIMES DURING PAVEMENT MARKING OPERATIONS. SEE TRAFFIC CONTROL DETAILS.

PLAN LEGEND

- ROAD SECTIONS TO BE PAINTED TO MATCH EXISTING
- TRAIL SECTIONS TO BE PAINTED WITH PAVEMENT MARKINGS 4", YELLOW SKIP DASH; 5" DASH WITH 15" SKIP

BID DOCUMENTS

**SOUTHERN ILLINOIS UNIVERSITY
EDWARDSVILLE**
 ROAD MAINTENANCE AND DELYTE
 MORRIS TRAIL RECONSTRUCTION
 PAVEMENT MARKING PLAN



EXP. 3/13/13
 PROJECT NO.:
 11028.030
 DATE:
 5/29/13
 SHEET NO.:

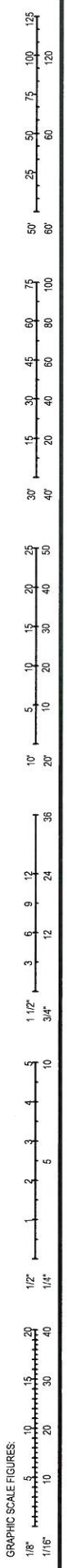
C1.3

COPYRIGHT 2013 BY OATES ASSOCIATES

MISSOURI
 Laclede Gas Building
 720 Olive, Suite 1660
 St. Louis, MO 63101
 Tel: 314.588.6381
 Fax: 314.588.9605
 www.oatesassociates.com



NO.	DATE	REMARKS



H:\P11028\W0 30 - EDWARDSVILLE CAMPUS ROAD MAINTENANCE\DWG\11028.030 MAINTENANCE PROGRAM DESIGN.DWG
5/28/2013



**PARTIAL DEPTH PAVEMENT PATCHING
ESTIMATED LOCATIONS**

ROAD SECTION	ESTIMATED AREA
NORTH CIRCLE DRIVE	65 SQ YD
SOUTH CIRCLE DRIVE	10 SQ YD
NORTH UNIVERSITY DRIVE	20 SQ YD
PECK SERVICE ROAD	5 SQ YD

PLAN NOTES

1. ACTUAL LOCATIONS AND QUANTITIES OF PARTIAL DEPTH PAVEMENT PATCHING MAY VARY. INFORMATION GIVEN IS FOR BIDDING PURPOSES ONLY.
2. TRAFFIC CONTROL ACCORDING TO HIGHWAY STANDARDS 701301 AND 701311 SHALL BE USED AT ALL TIMES DURING PAVEMENT PATCHING OPERATIONS. SEE TRAFFIC CONTROL DETAILS.
3. PARTIAL DEPTH PAVEMENT PATCHING LOCATIONS WILL BE LAID OUT BY THE ENGINEER DURING CONSTRUCTION.
4. SEE DETAIL D5/C4.1 FOR ADDITIONAL PARTIAL DEPTH PAVEMENT PATCHING DETAILS.

PLAN LEGEND

ROAD SECTIONS REQUIRING PARTIAL DEPTH PATCHING



REVISIONS:

NO.	DATE	REMARKS

MISSOURI
Laclede Gas Building
720 Olive, Suite 1660
St. Louis, MO 63101
tel 314.588.8361 fax 314.588.9605

ILLINOIS
Eastport Business Center 1
100 Lanier Court, Suite 1
Collinsville, IL 62234
tel 618.345.2200 fax 618.345.7233
www.oatesassociates.com



**SOUTHERN ILLINOIS UNIVERSITY
EDWARDSVILLE**
ROAD MAINTENANCE AND DELYTE
MORRIS TRAIL RECONSTRUCTION
PARTIAL DEPTH PAVEMENT PATCHING PLAN



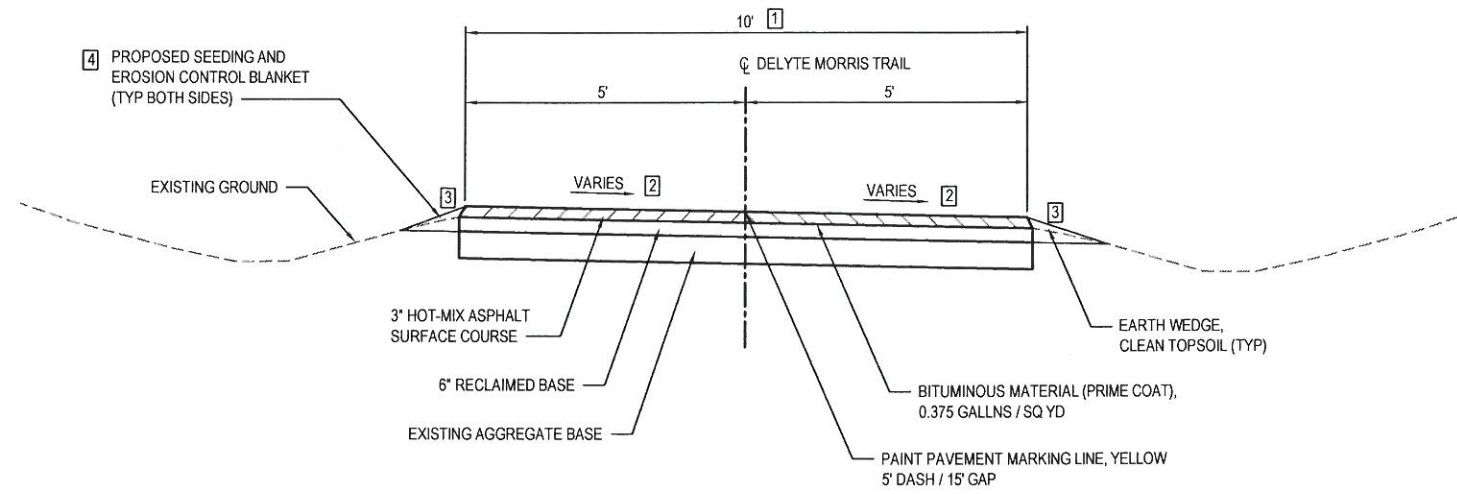
EXP. 3/13/13
PROJECT NO.: 11028.030
DATE: 5/29/13
SHEET NO.:

BID DOCUMENTS

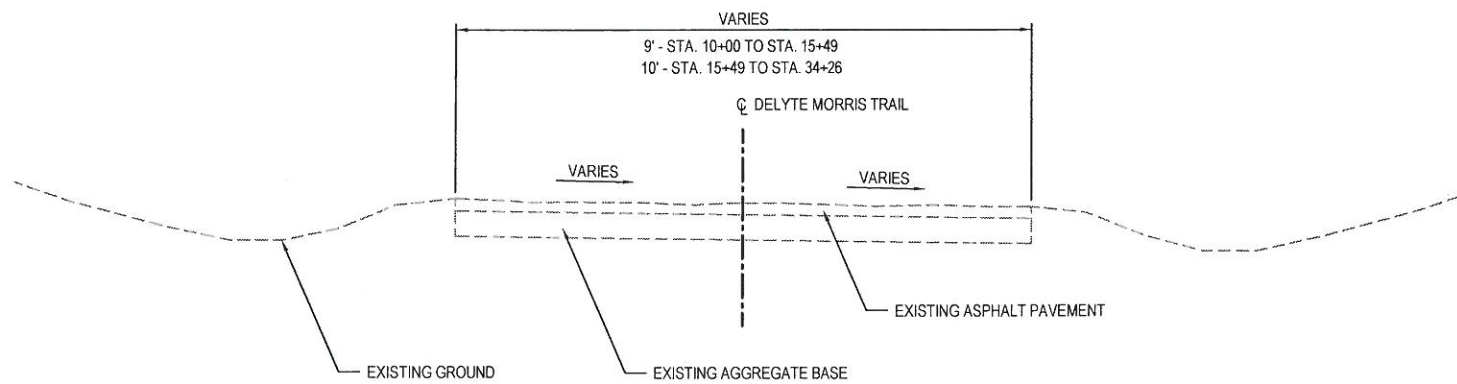
C1.4

COPYRIGHT 2013 BY OATES ASSOCIATES

H:\P11028\11028\11028\11028.030 MORRIS TRAIL DESIGN.DWG - 5/28/2013



PROPOSED TYPICAL SECTION - DELYTE MORRIS TRAIL
 NOT TO SCALE
 STA. 10+00 TO STA. 34+26



EXISTING TYPICAL SECTION - DELYTE MORRIS TRAIL
 NOT TO SCALE
 STA. 10+00 TO STA. 34+26

TYPICAL SECTION NOTES

- [1] RECLAIMED BASE SHALL HAVE A MINIMUM WIDTH OF 10 FT DESPITE ANY MINOR VARIATION IN THE EXISTING TRAIL WIDTH. IF AGGREGATE OR SOIL IS FOUND WITHIN THE 10 FT, IT SHALL BE UNIFORMLY INCORPORATED INTO THE RECLAIMED ASPHALT.
- [2] PROPOSED CROSS SLOPE SHALL MATCH THE EXISTING SLOPE, BUT SHALL NOT BE LESS THAN 0.5% AND SHALL NOT EXCEED 2.0%. MINOR GRADING OF BASE MATERIAL MAY BE NECESSARY TO MAINTAIN THE DESIRED SLOPE.
- [3] GRADE PROPOSED TOPSOIL AT 4:1 (TYPICAL) AND 3:1 (MAX).
- [4] EROSION CONTROL BLANKET SHALL BE USED ON ALL AREAS REQUIRING LAWN RESTORATION.

DELYTE MORRIS TRAIL - HMA MIXTURE TABLE		
MIXTURE USE	HMA SURFACE COURSE (DELYTE MORRIS TRAIL)	PARTIAL DEPTH PATCHING (CAMPUS MAINTENANCE)
THICKNESS	3"	2" - 3"
AC/PG	PG 64-22	PG 64-22
RAP % (MAX)	15%	10%
DESIGN AIR VOIDS	4.0% @ NDES = 50	4.0% @ NDES = 70
MIX COMPOSITION (GRADATION MIXTURE)	IL 9.5L	IL 12.5L
FRICTION AGG	MIXTURE "C"	MIXTURE "D"

REVISIONS NO.	DATE	REMARKS

MISSOURI
 Laclede Gas Building
 700 Laclede
 St. Louis, MO 63101
 Tel: 314.588.3381
 Fax: 314.588.9605
 www.catesassociates.com

ILLINOIS
 Eastport Business Center 1
 200 Lantier
 Suite 100
 Carle Place, IL 60134
 Tel: 618.345.7200
 Fax: 618.345.7233
 www.catesassociates.com



SOUTHERN ILLINOIS UNIVERSITY EDWARDSVILLE
 ROAD MAINTENANCE AND DELYTE MORRIS TRAIL RECONSTRUCTION
 DELYTE MORRIS TRAIL TYPICAL SECTIONS



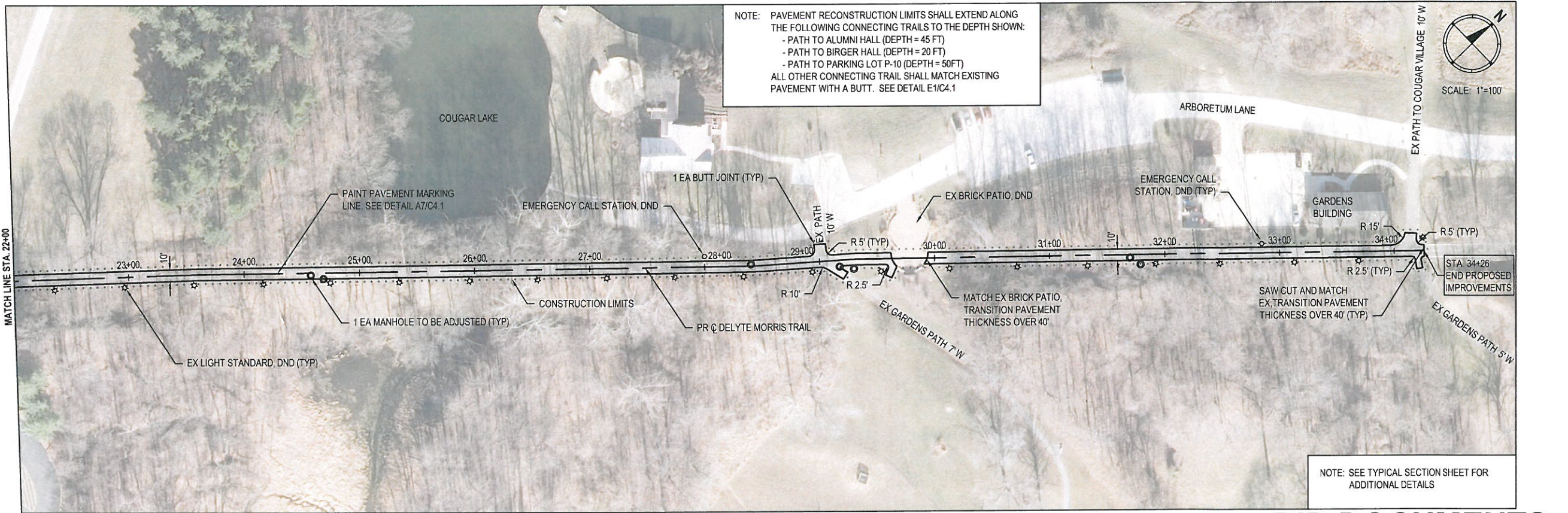
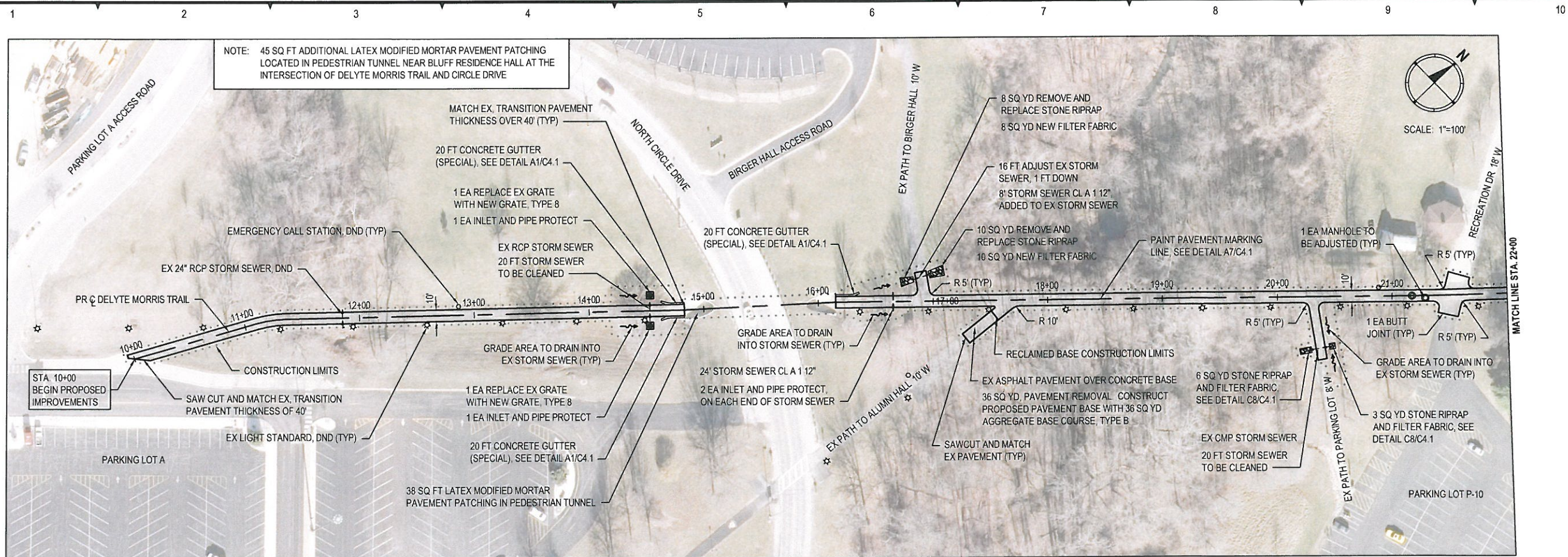
EXP. 3/13/13
 PROJECT NO.: 11028.030
 DATE: 5/29/13
 SHEET NO.:

C2.1

BID DOCUMENTS

GRAPHIC SCALE FIGURES:
 1/8" = 10'
 1/16" = 5'

H:\P11028\W0 30 - EDWARDSVILLE CAMPUS ROAD MAINTENANCE\DWG11028.030 MORRIS TRAIL DESIGN.DWG - 5/28/2013



NO.	DATE	REVISIONS	REMARKS

MISSOURI
Laclede Gas Building
720 Olive, Suite 1660
St. Louis, MO 63101
Tel: 314.589.8311
Fax: 314.589.9505
www.oatesassociates.com

ILLINOIS
Eastport Business Center 1
100 Laner Court, Suite 1
Collinsville, IL 62234
Tel: 618.345.2200
Fax: 618.345.7233
www.oatesassociates.com

OATES ASSOCIATES
Engineering - Architecture

SOUTHERN ILLINOIS UNIVERSITY
EDWARDSVILLE
ROAD MAINTENANCE AND DELTE
MORRIS TRAIL RECONSTRUCTION
DELTE MORRIS TRAIL PLAN SHEET

THOMAS LEE CISSE
002-0001
LICENSED
PROFESSIONAL
ENGINEER
STATE OF ILLINOIS
5/29/13

EXP. 3/13/13
PROJECT NO.:
11028.030
DATE:
5/29/13
SHEET NO.:

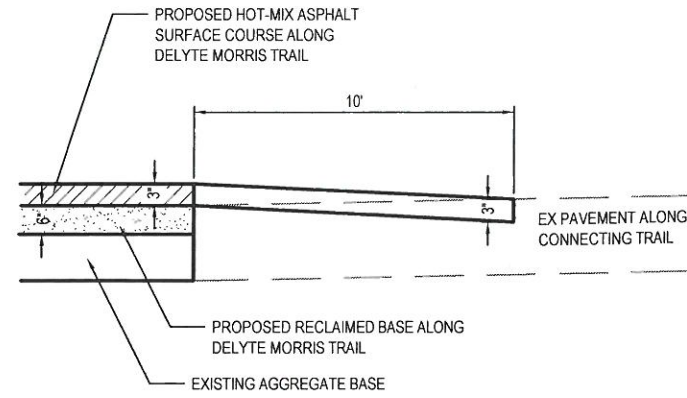
BID DOCUMENTS

C3.1

H:\P11028\W0 30 - EDWARDSVILLE CAMPUS ROAD MAINTENANCE\DWG\11028.030 MORRIS TRAIL DESIGN.DWG - 5/28/2013

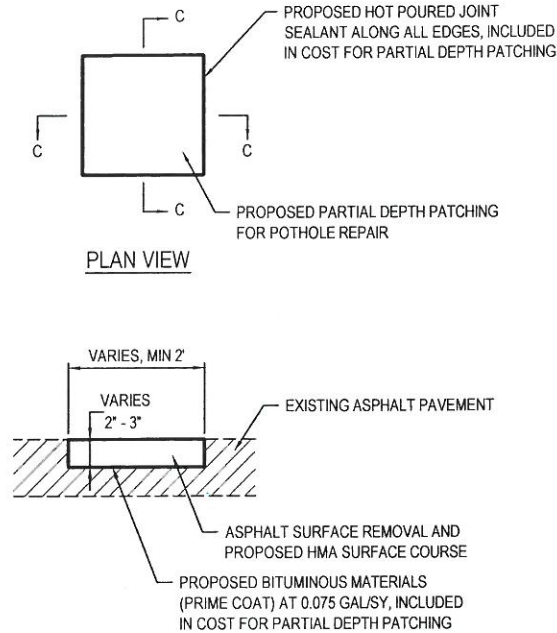
1 2 3 4 5 6 7 8 9 10

G
F
E
D
C
B
A



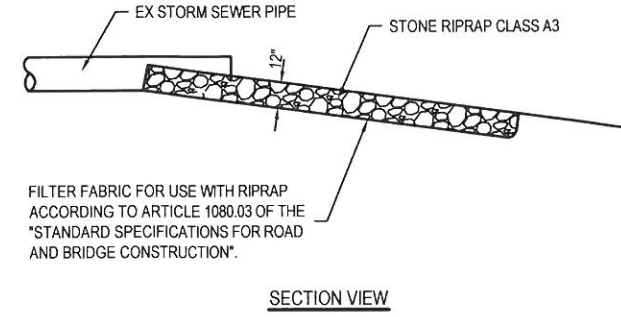
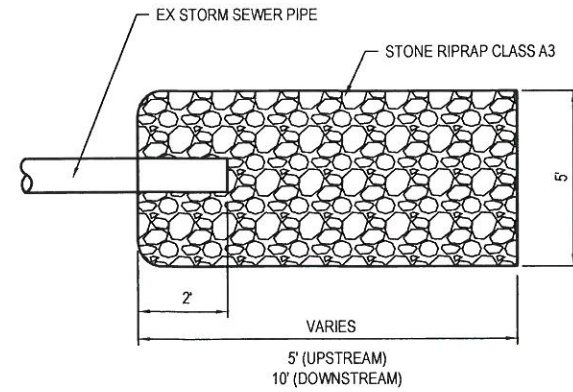
- NOTES:**
1. THE DEPTH OF BUTT JOINT IS MEASURED ALONG THE SMALLER EDGE OF PAVEMENT OF THE CONNECTING TRAIL.

E1
C4.1 BUTT JOINT DETAIL - CONNECTING TRAIL
SCALE: NO SCALE



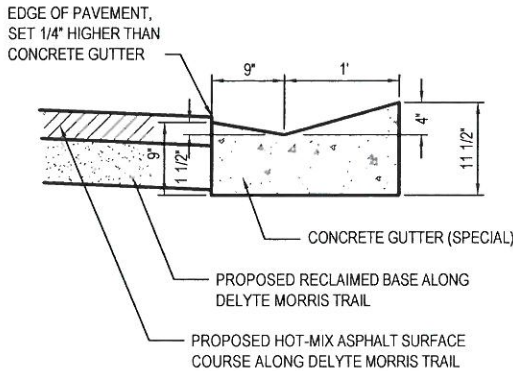
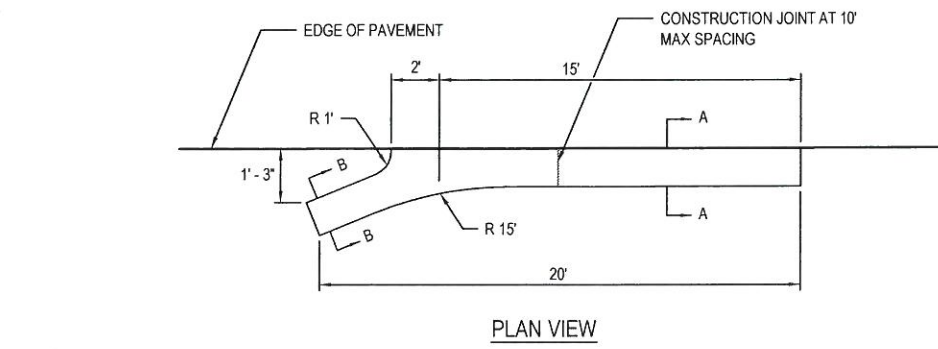
- NOTES:**
1. THE DEPTH OF PARTIAL DEPTH PATCHING VARIES FROM 2"-3". CONTRACTOR SHALL MATCH THE DEPTH OF THE EXISTING ASPHALT SURFACE COURSE.

D5
C4.1 PARTIAL DEPTH PAVEMENT PATCHING
SCALE: NO SCALE

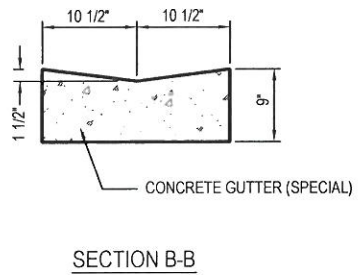


- NOTES:**
1. STONE RIPRAP NEAR PARKING LOT P-10 SHALL BE PLACED TO MATCH THE DETAIL SHOWN.
 2. REMOVED RIPRAP NEAR BIRGER HALL SHALL BE REPLACED USING EXISTING RIPRAP WITH NEW FILTER FABRIC TO MATCH EXISTING CONDITIONS.

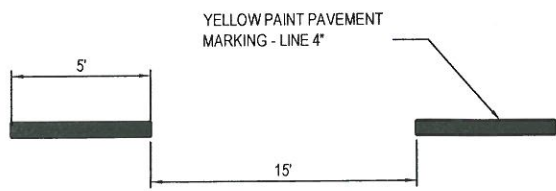
C8
C4.1 STONE RIPRAP DETAIL
SCALE: NO SCALE



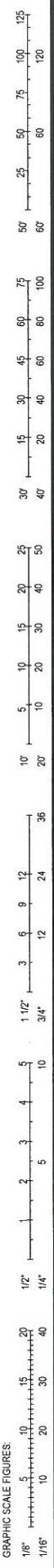
A1
C4.1 CONCRETE GUTTER (SPECIAL)
SCALE: NO SCALE



SECTION B-B



A7
C4.1 TRAIL CENTERLINE SKIP DASH DETAIL
SCALE: NO SCALE



NO.	DATE	REMARKS

MISSOURI
 7200 Olive Building
 Suite 100
 St. Louis, MO 63101
 Tel: 314.588.6381
 Fax: 314.588.9605
 www.catesassociates.com

ILLINOIS
 1000 East Business Center 1
 Suite 1
 Collinsville, IL 62234
 Tel: 618.345.2200
 Fax: 618.345.7233
 www.catesassociates.com



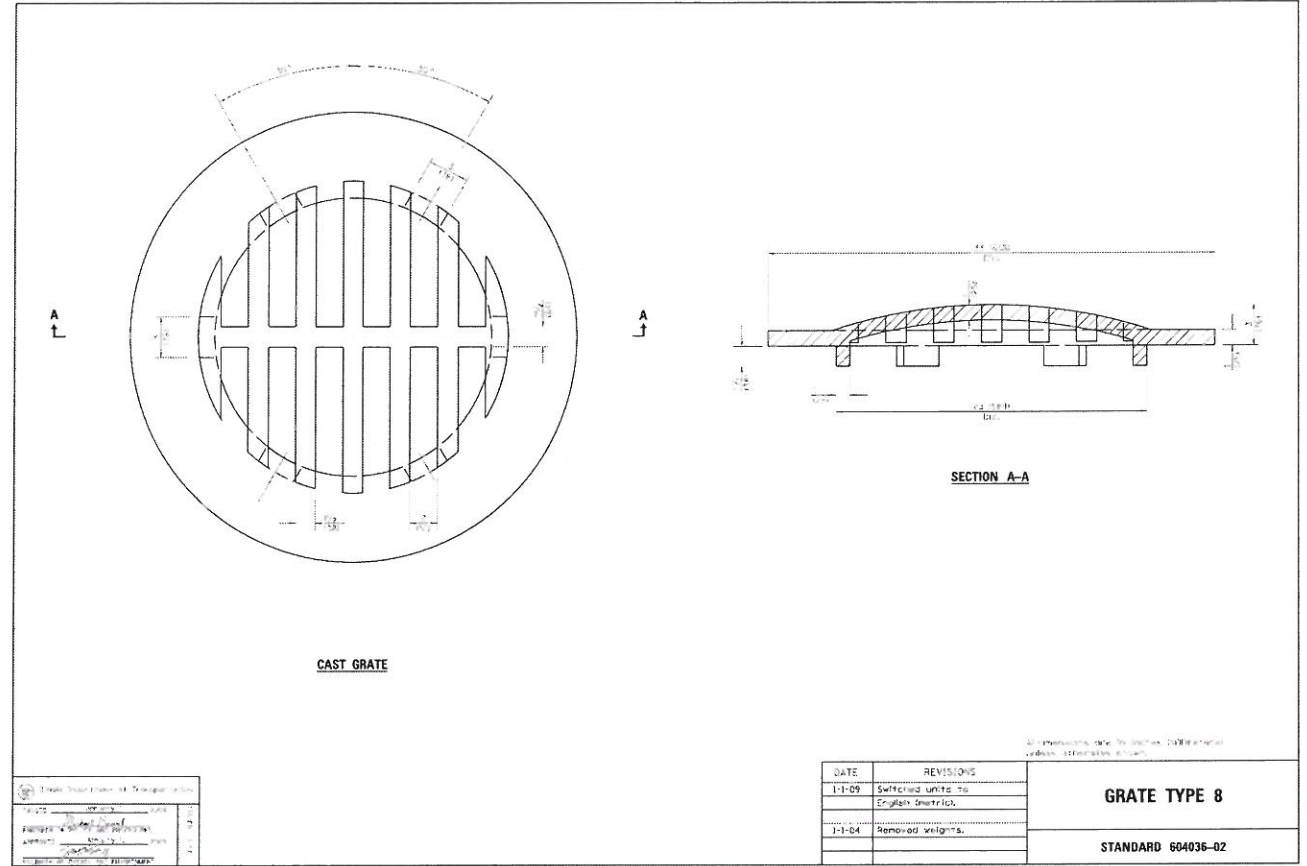
SOUTHERN ILLINOIS UNIVERSITY EDWARDSVILLE
 ROAD MAINTENANCE AND DELYTE MORRIS TRAIL RECONSTRUCTION
 CONSTRUCTION DETAILS



EXP. 3/13/13
 PROJECT NO.: 11028.030
 DATE: 5/29/13
 SHEET NO.:

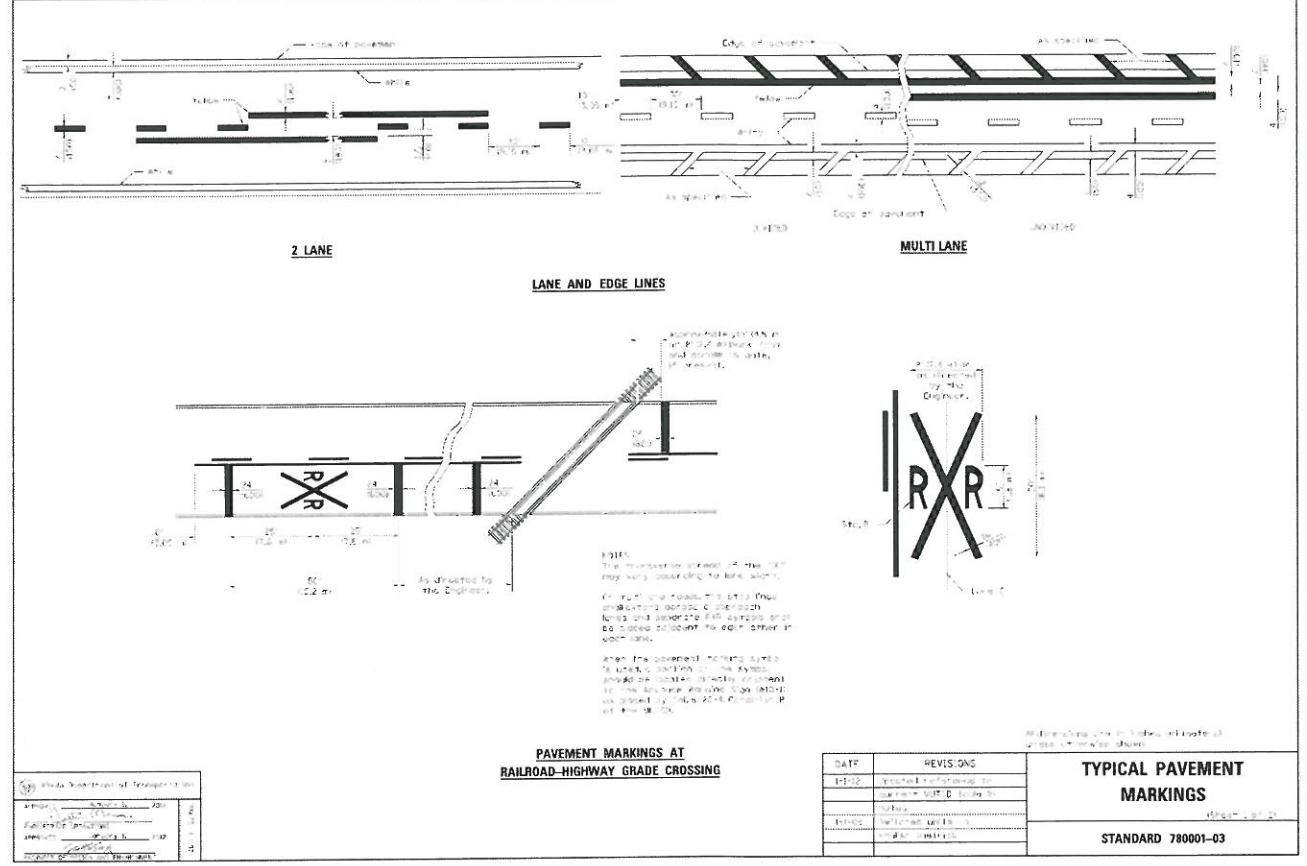
C4.1
COPYRIGHT 2013 BY CATES ASSOCIATES

BID DOCUMENTS



DATE	REVISIONS	STANDARD
1-1-09	Switched units to English metrics.	GRATE TYPE 8
1-1-04	Removed weights.	STANDARD 604036-02

D1 GRATE TYPE 8
C4.2 SCALE: NO SCALE



DATE	REVISIONS	STANDARD
1-1-09	Switched units to English metrics.	TYPICAL PAVEMENT MARKINGS
1-1-04	Removed weights.	STANDARD 780001-03

D6 TYPICAL PAVEMENT MARKINGS
C4.2 SCALE: NO SCALE



REVISIONS NO.	DATE	REMARKS

MISSOURI
Ladouceur Gas Building
100 Ladouceur
St. Charles, MO 63101
Tel: 314.589.8381
Fax: 314.589.9605

ILLINOIS
Eastport Business Center 1
100 Ladouceur
St. Charles, MO 63101
Tel: 314.589.8381
Fax: 314.589.9605

www.ostessociates.com



SOUTHERN ILLINOIS UNIVERSITY EDWARDSVILLE
ROAD MAINTENANCE AND DELYTE
MORRIS TRAIL RECONSTRUCTION
CONSTRUCTION DETAILS

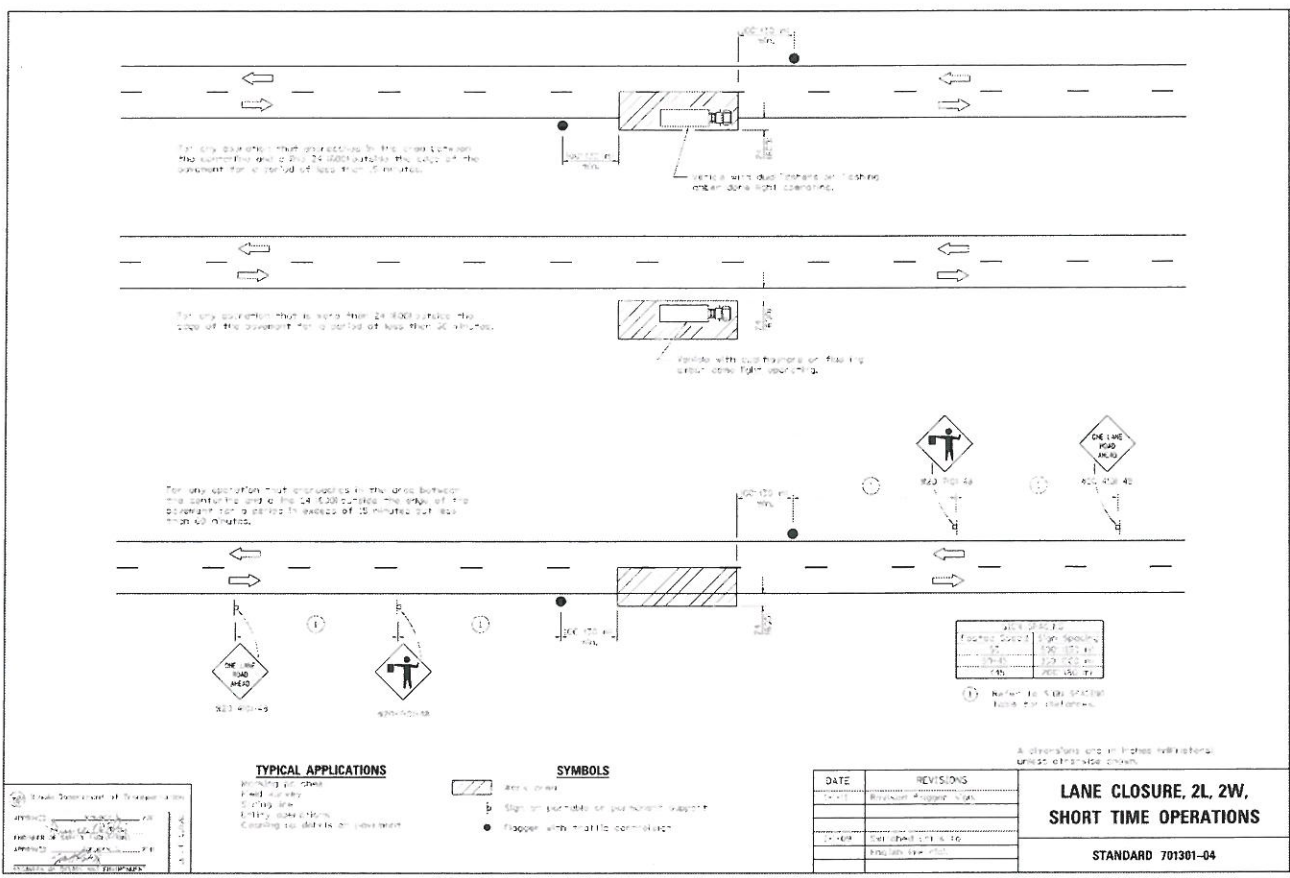


EXP. 3/13/13
PROJECT NO.: 11028.030
DATE: 5/29/13
SHEET NO.:

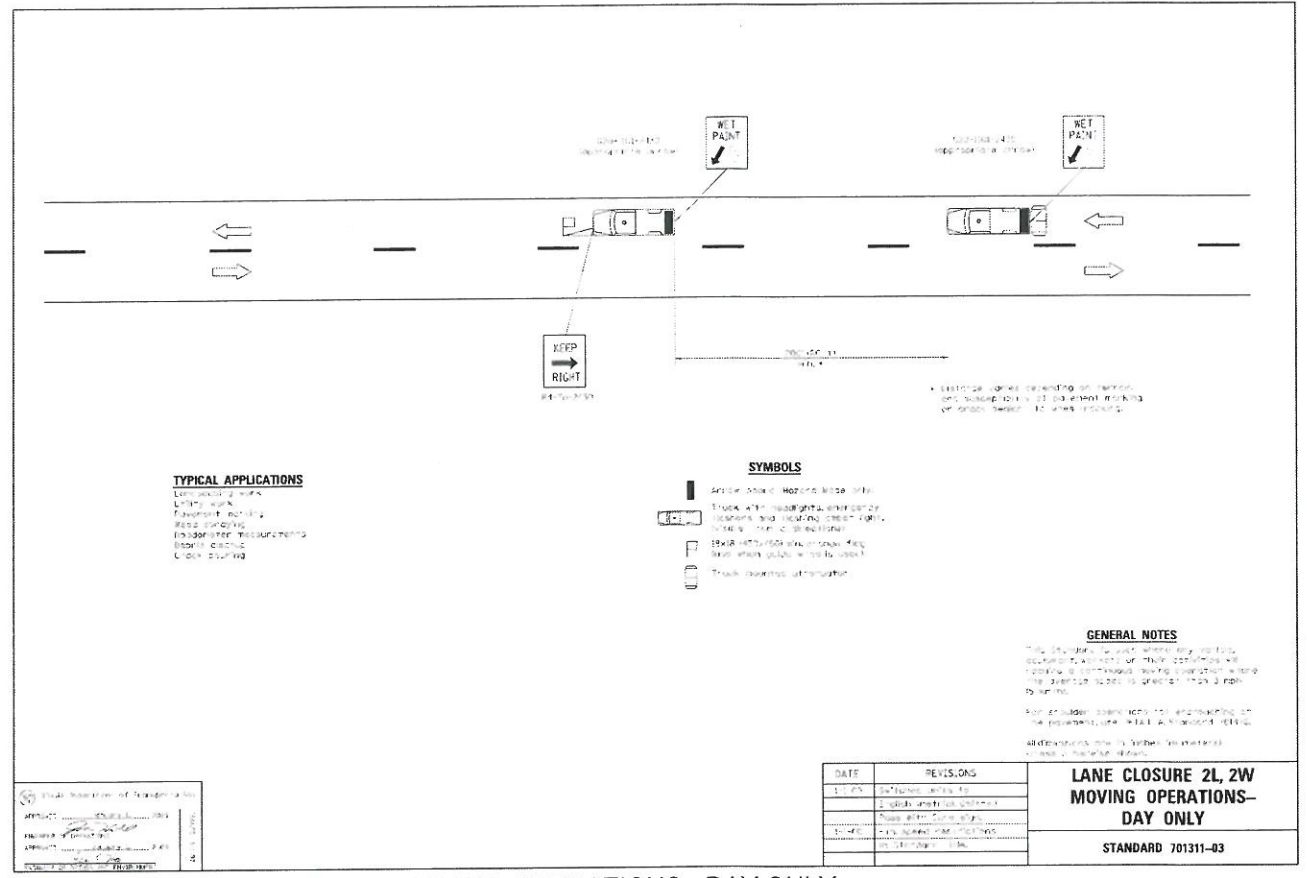
BID DOCUMENTS

C4.2

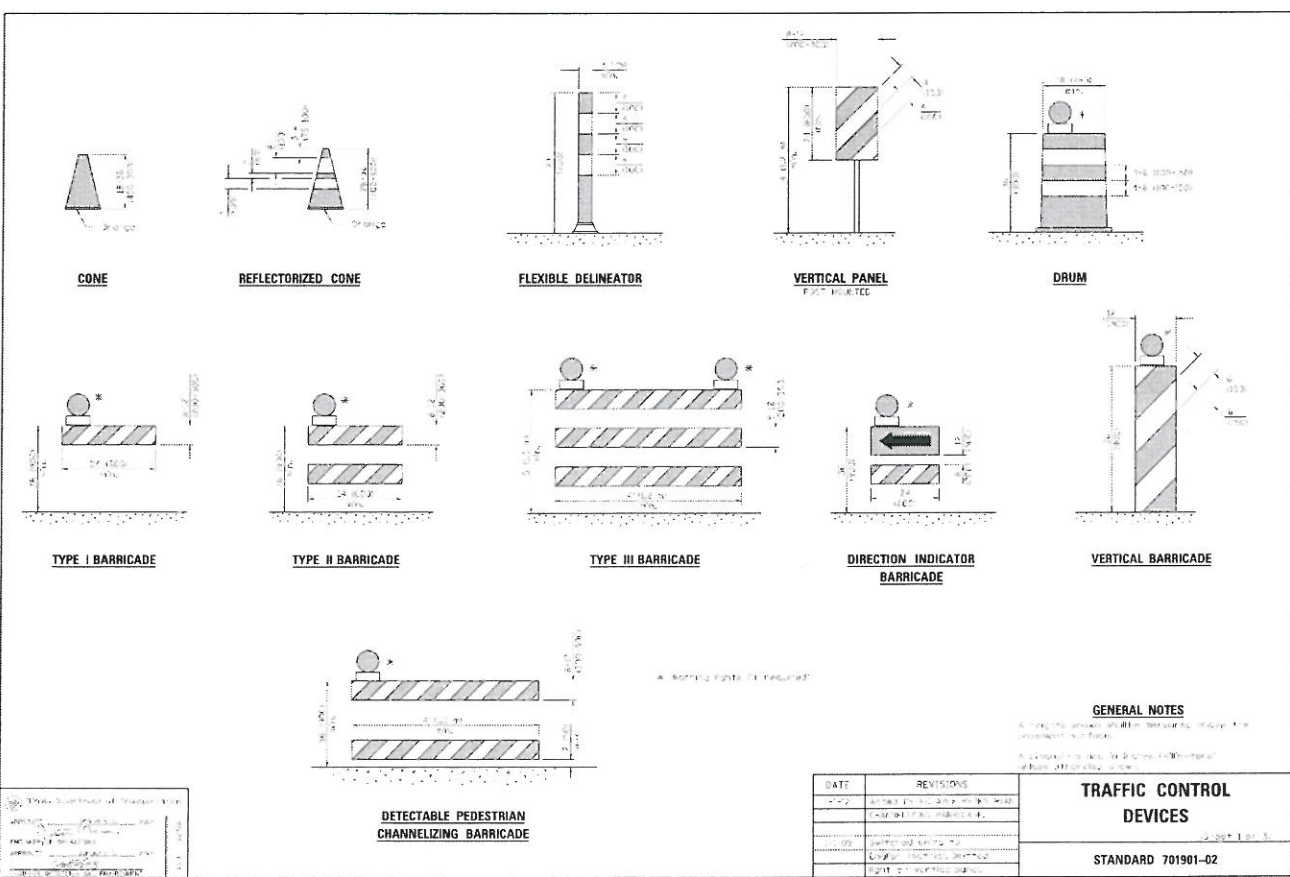
H:\P11028\1030 - EDWARDSVILLE CAMPUS ROAD MAINTENANCE\DWG11028.030 MORRIS TRAIL DESIGN.DWG - 5/28/2013



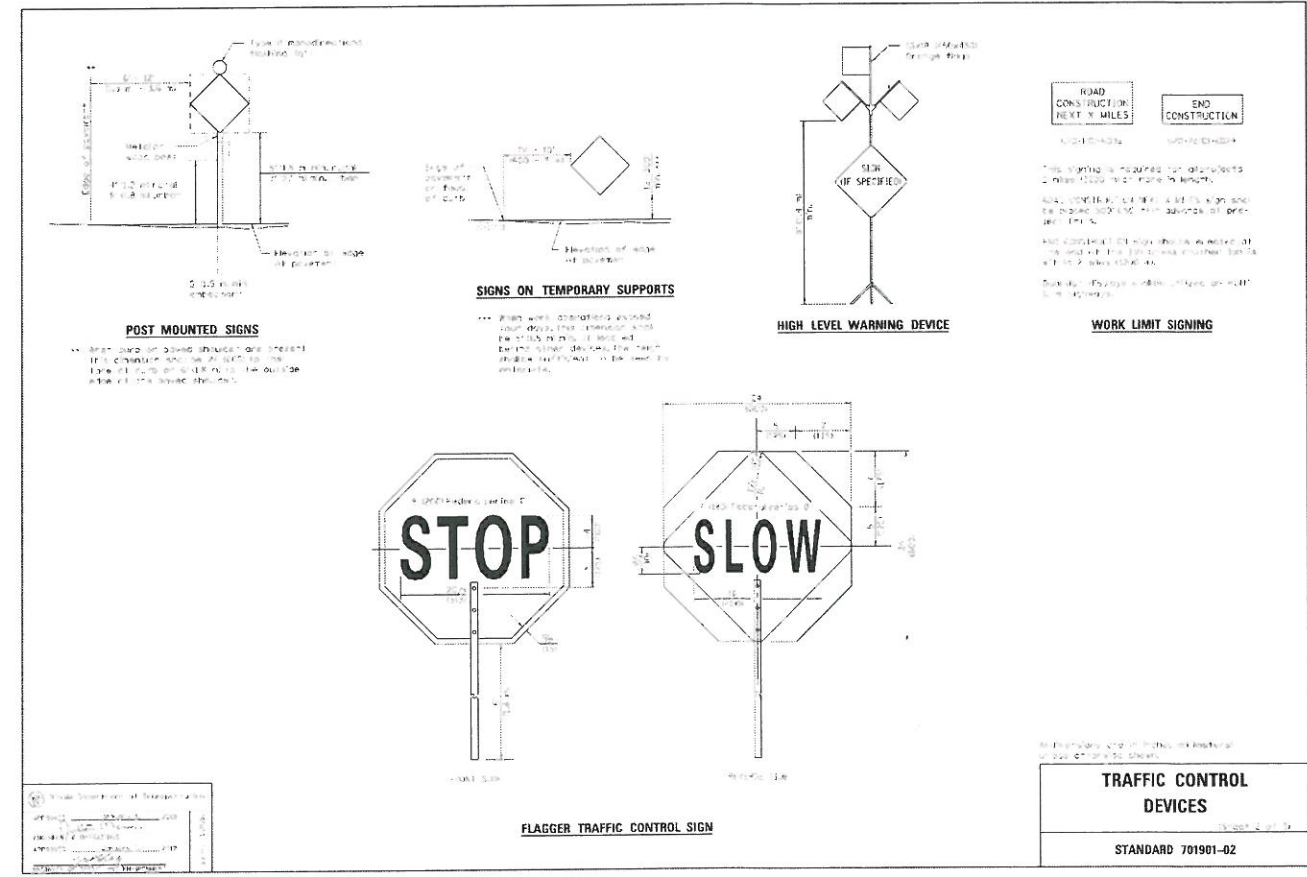
D1 LANE CLOSURE, 2L, 2W, SHORT TIME OPERATIONS
C5.1 SCALE: NO SCALE



D6 LANE CLOSURE 2L, 2W MOVING OPERATIONS - DAY ONLY
C5.1 SCALE: NO SCALE



A1 TRAFFIC CONTROL DEVICES
C5.1 SCALE: NO SCALE



A6 TRAFFIC CONTROL DEVICES
C5.1 SCALE: NO SCALE

BID DOCUMENTS



REVISIONS:

NO.	DATE	REMARKS

MISSOURI
Middle Gate Building
7200 N. Lindbergh Blvd.
Suite 100
St. Louis, MO 63101
Tel: 314.588.8381
Fax: 314.588.9605

ILLINOIS
Eastport Business Center 1
Suite 1
Collegeville, IL 62224
Tel: 618.345.2200
Fax: 618.345.7233
www.odataassociates.com



SOUTHERN ILLINOIS UNIVERSITY EDWARDSVILLE
ROAD MAINTENANCE AND DELTE MORRIS TRAIL RECONSTRUCTION
TRAFFIC CONTROL DETAILS



EXP. 3/13/13
PROJECT NO.: 11028.030
DATE: 5/29/13
SHEET NO.:

C5.1